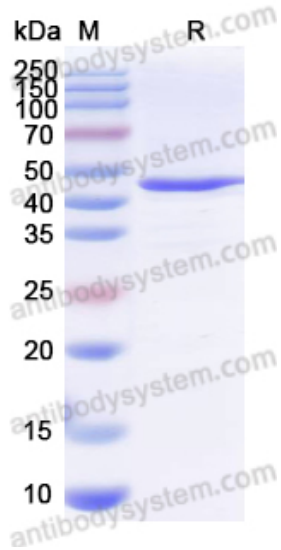


CU43 Protease (Human IgG Specific)

Catalog No.	YXX25001A YXX25001B	Quantity:	100 µg 1.0 mg
Alternate Names:	CU43 Protease, CU43		
Description:	Recombinant CU43 Protease is cloned from <i>Corynebacterium ulcerans</i> and expressed in <i>E. coli</i> . (Note: EXX25001 expressed in mammalian cells)		
Concentration:	1.0 mg/ml, lot specific		
Species:	<i>Corynebacterium ulcerans</i>		
Source:	Expressed in <i>E. coli</i>		
Formulation:	Sterile-filtered 0.01M PBS, pH 7.4, 50% glycerol		
Molecular Weight:	44.89 kDa		
Purity:	> 90% as determined by SDS-PAGE.		
Applications:	Proteomics		
Manufacturer:	Antibody System		
Storage & Stability:	Stable for up to 1 year from date of receipt at -20°C to -80°C or store working aliquots at -20°C to -80°C. Avoid repeated freeze-thaw cycles.		

SDS-PAGE CU43 Protease



Human IgG Fc +/- CU43 Protease



NOT FOR HUMAN USE. FOR RESEARCH ONLY. NOT FOR DIAGNOSTIC OR THERAPEUTIC USE.

