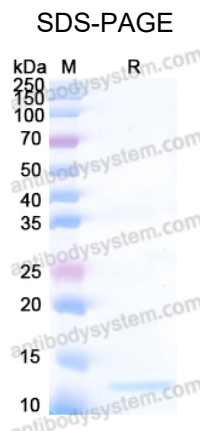


esxA

Recombinant *Mycobacterium tuberculosis* esat6 Protein, C-His Tag

Catalog No.	YXX06102A YXX06102B	Quantity:	100 µg 1.0 mg
Alternate Names:	6 kDa early secretory antigenic target, ESAT-6, esaT6		
Description:	Recombinant <i>Mycobacterium tuberculosis</i> esat6 Protein expressed and purified from <i>E. coli</i> with a C-His tag		
UniProt ID:	P9WVK7		
Source:	Expressed in <i>E. coli</i>		
Protein Construction:	Met1-Ala95 of 6 kDa early secretory antigenic target from <i>Mycobacterium tuberculosis</i> (strain ATCC 25618 / H37Rv) with a C-terminal His tag		
Molecular Weight:	10.73 kDa predicted		
Formulation:	Lyophilized from PBS pH 7.4, 0.02% NLS, 1mM EDTA, 4% trehalose, 1% mannitol		
Purity:	> 90 % as determined by SDS-PAGE.		
Tag:	C-terminal His		
Reconstitution:	Reconstitute with sterile deionized water to prepare a stock solution of 0.1-1.0 mg/ml.		
Brand:	Antibody System		
Storage & Stability:	Upon receipt, store lyophilized protein at -20°C to -80°C for up to 1 year. Avoid repeated freeze-thaw cycles.		



NOT FOR HUMAN USE. FOR RESEARCH ONLY. NOT FOR DIAGNOSTIC OR THERAPEUTIC USE.