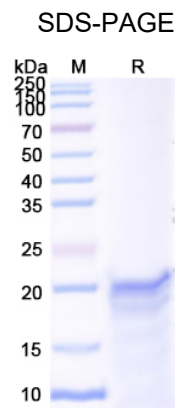


MAPT

Recombinant Human MAPT/Tau/PHF-tau Protein, N-His

Catalog No.	YHC82402A YHC82402B	Quantity:	100 µg 1.0 mg
Alternate Names:	Microtubule-associated protein tau, Neurofibrillary tangle protein Paired helical filament-tau, PHF-tau		
Description:	Recombinant Human Microtubule-associated protein tau (MAPT) was expressed in <i>E. coli</i> as Gly243-Pro372 fused with a N-terminal His tag.		
UniProt ID:	P10636		
Source:	<i>E. coli</i>		
Molecular Weight:	15.81 kDa predicted		
Protein Construction:	A DNA sequence encoding the human MAPT (Gly243-Pro372) was fused with a N-terminal His tag		
Tag:	N-terminal His		
Formulation:	Lyophilized from PBS pH 7.4, 1mM EDTA, 4% Trehalose, 1% Mannitol		
Purity:	> 90% as determined by SDS-PAGE		
Reconstitution:	Centrifuge vial prior to opening. Add sterile distilled water to a concentration of 0.1-1.0 mg/mL and gently pipette the solution up and down the sides of the vial. DO NOT VORTEX. Allow several minutes for complete reconstitution.		
Manufacturer:	Antibody System		
Storage & Stability:	Store as supplied at -20°C to -80°C for up to 1 year. Upon reconstitution, prepare working aliquots and store at -20°C to -80°C for up to 3 months. Avoid repeated freeze-thaw cycles.		



NOT FOR HUMAN USE. FOR RESEARCH ONLY. NOT FOR DIAGNOSTIC OR THERAPEUTIC USE.

