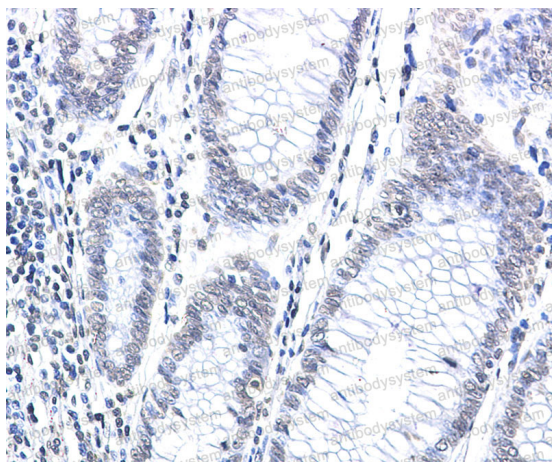


## CPS1

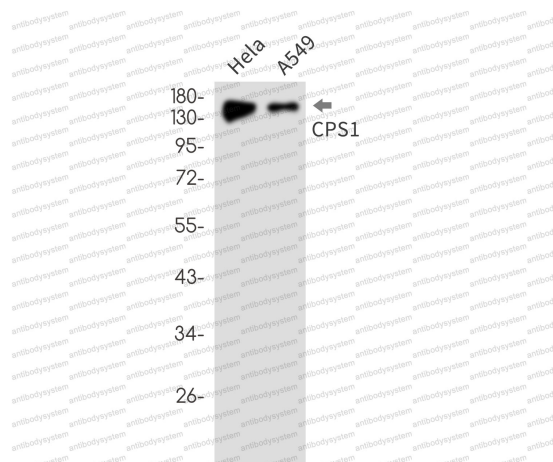
### Rabbit Anti-Human CPS1 (R1U19) mAb

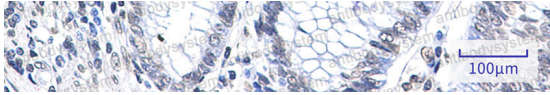
<b>Catalog No.</b>	RHD94901A RHD94901B	<b>Quantity:</b>	50 µg 100 µg
<b>Alternate Names:</b>	Carbamoyl-phosphate synthase [ammonia], mitochondrial, Carbamoyl-phosphate synthetase I, CPSase I		
<b>Description:</b>	Affinity purified rabbit monoclonal anti-Human CPS1 (R1U19) is specific for human Carbamoyl-phosphate synthetase I		
<b>UniProt ID (target):</b>	P31327		
<b>Target:</b>	Human Carbamoyl-phosphate synthetase I		
<b>Concentration:</b>	1.0 mg/ml, lot specific		
<b>Source:</b>	Mammalian cells		
<b>Isotype:</b>	Rabbit IgG		
<b>Formulation:</b>	0.01M PBS buffer, pH 7.4, 0.05% BSA, 50% glycerol, 0.05% sodium azide		
<b>Purity:</b>	> 95% by SDS-PAGE		
<b>Purification:</b>	Protein A/G affinity chromatography from cell culture supernatant		
<b>Clone:</b>	R1U19		
<b>Applications:</b>	IHC: suggested dilution 1:50- 1:100 IP: suggested dilution 1:20 Western blot: suggested dilution 1:500- 1:1000		
<b>Manufacturer:</b>	Antibody System		
<b>Storage &amp; Stability:</b>	Store at 2-8°C for frequent use or in working aliquots at -20°C to -80°C for up to 1 year. <b>Avoid freeze/thaw cycles.</b>		

IHC-P of human colon cancer.  
High-pressure/temperature, sodium citrate  
pH 6.0 used for antigen retrieval



Western blot analysis of CPS1 in HeLa, A549 lysates.





**NOT FOR HUMAN USE. FOR RESEARCH ONLY. NOT FOR DIAGNOSTIC OR THERAPEUTIC USE.**



**Cell Sciences®**  
65 Parker Street  
Unit 11  
Newburyport, MA 01950

Toll Free: 888-769-1246  
Phone: 978-572-1070  
Fax: 978-992-0298

E-mail: [info@cellsciences.com](mailto:info@cellsciences.com)  
Website: [www.cellsciences.com](http://www.cellsciences.com)