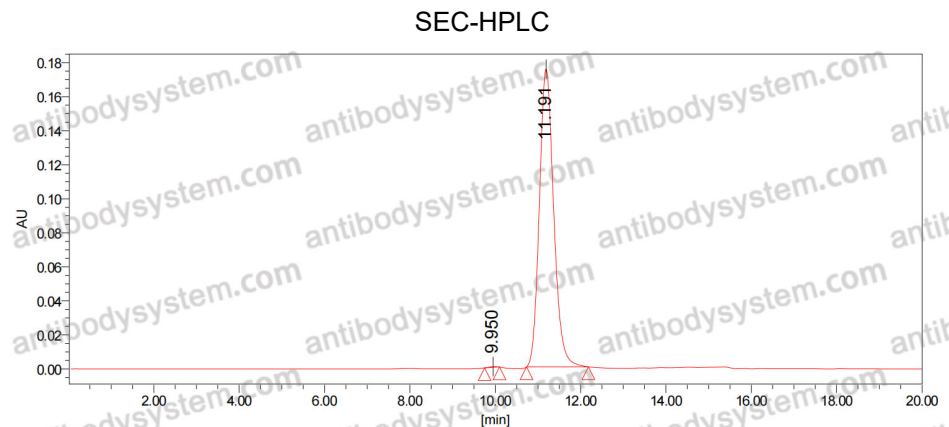


## APP

### Mouse Anti-Human APP/Amyloid beta (3D6)

|                                 |   |                  |        |
|---------------------------------|---|------------------|--------|
| <b>Catalog No.</b>              | RHC12506A   | <b>Quantity:</b> | 100 µg |
|                                 | RHC12506B   |                  | 1.0 mg |
| <b>Alternate Names:</b>         | Amyloid-beta precursor protein, ABPP, APP, Alzheimer disease amyloid A4 protein homolog, Alzheimer disease amyloid protein, Amyloid precursor protein               |                  |        |
| <b>Description:</b>             | Affinity purified mouse monoclonal antibody (clone 3D6) which binds Human Amyloid beta.   |                  |        |
| <b>UniProt ID (target):</b>     | P05067  |                  |        |
| <b>Source:</b>                  | Mammalian cells   |                  |        |
| <b>Specificity:</b>             | Human Amyloid beta  |                  |        |
| <b>Isotype:</b>                 | Mouse IgG2a kappa   |                  |        |
| <b>Clone:</b>                   | 3D6   |                  |        |
| <b>Purification:</b>            | Protein A/G affinity chromatography from cell culture supernatant   |                  |        |
| <b>Purity:</b>                  | > 95% by SDS-PAGE and SEC-HPLC  |                  |        |
| <b>Formulation:</b>             | Sterile-filtered 0.01M PBS, pH 7.4  |                  |        |
| <b>Binding Activity:</b>        | EC <sub>50</sub> = 211.7 mg/ml, clone 3D6 binds with Human APP by indirect ELISA  |                  |        |
| <b>Concentration:</b>           | 1.0 mg/ml, lot specific   |                  |        |
| <b>Manufacturer:</b>            | Antibody System   |                  |        |
| <b>Applications:</b>            | ELISA, SPR  |                  |        |
| <b>Storage &amp; Stability:</b> | Store at 2-8°C for immediate use within 1-2 weeks or aliquot the stock solution and store at -20°C to -80°C up to 1 year. <b>Avoid repeated freeze/thaw cycles.</b> |                  |        |



NOT FOR HUMAN USE. FOR RESEARCH ONLY. NOT FOR DIAGNOSTIC OR THERAPEUTIC USE.

