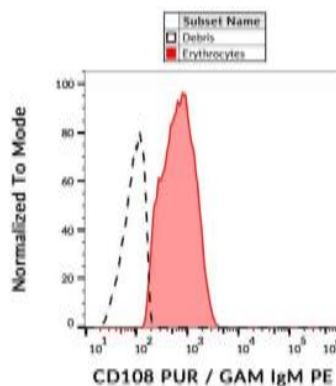


SEMA7A

Mouse Anti-human CD108 (Clone MEM-150) mAb

Catalog No.	MON1163	Quantity:	100 µg
Alternate Names:	Semaphorin-7A, CDw108, JMH blood group antigen, John-Milton-Hargen human blood group Ag, Semaphorin-K1, Sema K1, Semaphorin-L, Sema L, CD108		
Description:	MON 1163 reacts with CD108 (JMH blood group antigen), a 80 kDa GPI-anchored glycoprotein expressed on various cell types including erythrocytes, lymphoblasts; at low levels it is present on circulating lymphocytes.		
Concentration:	1 mg/ml		
Uniprot ID:	O75326		
Specificity:	CD108		
Host:	Host		
Immunogen:	HPB-ALL human T cell line		
Isotype:	IgM		
Clone:	MEM-150		
Formulation:	PBS containing 15 mM sodium azide		
Applications:	WB, FC, IP		
Storage & Stability:	Store undiluted antibody at 2-8°C until expiration date.		



NOT FOR HUMAN USE. FOR RESEARCH ONLY. NOT FOR DIAGNOSTIC OR THERAPEUTIC USE.



Cell Sciences®
65 Parker Street
Unit 11
Newburyport, MA 01950

Toll Free: 888-769-1246
Phone: 978-572-1070
Fax: 978-992-0298

E-mail: info@cellsciences.com
Website: www.cellsciences.com