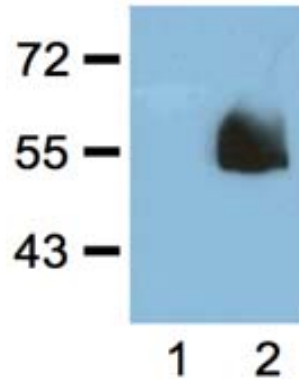


Mouse Anti-HA Tag Clone HA.C5/C10 mAb

Catalog No.	CSI20564A CSI20564B CSI20564C	Quantity:	50 µg 100 µg 1.0 mg
Description:	Mouse Anti-HA Tag Clone HA.C5/C10 mAb		
Concentration:	1.0 mg/ml		
Specificity:	Recognizes the N-terminal, C-terminal or internal HA-tagged fusion proteins.		
Host:	Mouse		
Immunogen:	YPYDVPDYA (HA) synthetic peptide conjugated to KLH		
Isotype:	IgG3		
Clone:	HA.C5 / C10		
Formulation:	Liquid in 10 mM PBS, pH 7.2.		
Purification:	Protein A affinity chromatography from mouse ascites fluid		
Applications:	Dot Blot ELISA Immunoprecipitation Immunostaining Western Blot		
Application Notes:	Western blot sensitivity(with ECL): 1-5 ng of HA-tagged fusion proteins Wesern Blot (with ECL): working dilution of 1:1,000-3,000 (incubate for one hour at room temperature). Immunostaining: working dilution of 1:500-2,000. The optimal concentration should be determined by the user for each specific application.		
Storage & Stability:	Store at 2-4°C (add 0.1% NaN ₃) for several days to weeks, and at -20°C for longer periods. Avoid repeated freeze-thaw cycles.		



1:1,000 (1µg/mL) Ab dilution probed against HEK293 cells transfected with HA-tagged protein vector;
untransfected (1) and transfected (2)



NOT FOR HUMAN USE. FOR RESEARCH ONLY. NOT FOR DIAGNOSTIC OR THERAPEUTIC USE.

