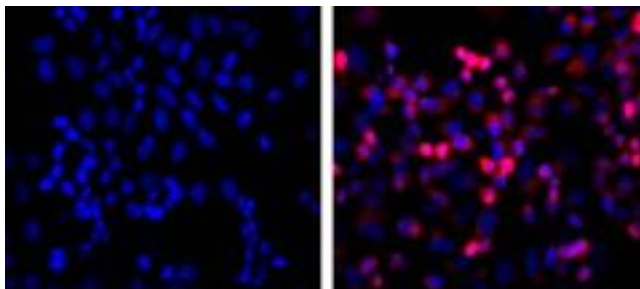


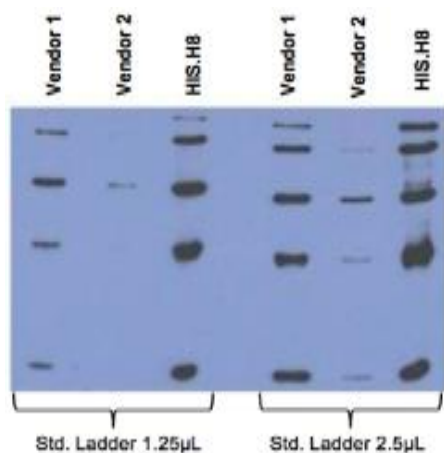
Mouse Anti-Histidine Tag (Clone HIS.H8) mAb

Catalog No.	CSI20563A CSI20563B CSI20563C	Quantity:	50 µg 100 µg 200 µg
Alternate Names:	Polyhistidine tag, 6xHis-tag, His6 tag		
Description:	The mouse monoclonal antibody recognizes the epitope of 6x His-tags encoded by many commercially available vectors, regardless of the tag's location in the fusion protein sequences, Reacts with N-terminal, C-terminal or internal 6x His-tags.		
Specificity:	Reacts with N-terminal, C-terminal or internal 6x His-tags.		
Concentration:	1.0 mg/mL		
Host:	Mouse		
Isotype:	IgG2b		
Immunogen:	HHHHHH (6x His) synthetic peptide conjugated to Keyhole Limpet Hemocyanin (KLH)		
Clone:	HIS.H8		
Formulation:	Liquid in 10 mM PBS, pH 7.2, with 0.05% NaN ₃ .		
Purification:	Protein A affinity chromatography from mouse ascites fluid.		
Applications:	Dot Blot, ELISA, Immunoprecipitation, Immunofluorescence, Western Blot		
Application Notes:	Western blot (with ECL): 1:1,000-3,000 dilution (1 hour at room temperature). Immunoprecipitation: 1:50-200 dilution Immunofluorescence: 1:500-2,000 dilution The optimal concentration should be determined by the user for each specific application.		
Storage & Stability:	Store at -20°C to -80°C for up to 1 year. Centrifuge after first thaw to maximize product recovery. Aliquot and store at 2-8°C for 1-2 weeks, or long-term at -20 to -80°C. Avoid repeated freeze-thaw cycles.		
Statement:	PPE is recommended when working with products containing sodium azide.		

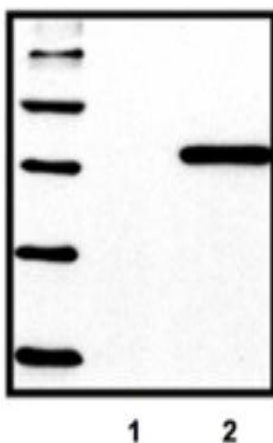




Immunofluorescence on cultured cells. LEFT: untransfected control; RIGHT: HEK293 cells transfected with His-tagged fusion protein. Both stained with anti-HIS (in red), counterstained with DAPI (in blue)



Comparison between anti-His tag (HIS.H8 / EH158) mAb with 2 different vendor Abs, probed against a standard ladder containing five different His-tagged proteins. All Ab dilutions are 1:2,000 (0.5 µg/mL)



Standard ladder containing five different His-tagged proteins; untransfected control (1), HEK293 cells transfected with His-tagged protein vector (2)

NOT FOR HUMAN USE. FOR RESEARCH ONLY. NOT FOR DIAGNOSTIC OR THERAPEUTIC USE.