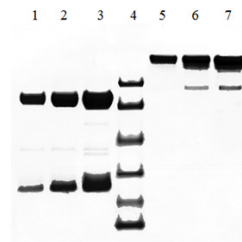


## Native Human Plasma IgE

<b>Catalog No.</b>	CSI20529A CSI20529B	<b>Quantity:</b>	100 µg 1.0 mg
<b>Alternate Names:</b>	Immunoglobulin E		
<b>Description:</b>	IgE is the least abundant immunoglobulin in plasma, found at a concentration of less than 0.6 micrograms/ml of normal plasma. Elevated IgE levels are found in patients experiencing severe allergic reactions and parasitic infections. The affinity purified IgE reacted only with anti IgE and not with anti IgG, IgA, IgM or IgD by immunodiffusion and IEP techniques.		
<b>UniProt ID:</b>	P01854		
<b>Gene ID:</b>	3497		
<b>Extinction Coefficient:</b>	$E_{280\text{ nm}}^{0.1\%} = 1.4$		
<b>Source:</b>	Human plasma		
<b>Molecular Weight:</b>	200 kDa		
<b>Formulation:</b>	0.1M Tris-HCl, 0.2 M NaCl, 0.05% Sodium Azide, pH 7.5. Precaution: Sodium azide is a poisonous and hazardous substance which should be handled by trained staff only.		
<b>Purity:</b>	>95% by SDS-PAGE analysis		
<b>Concentration:</b>	1.0 mg/ml		
<b>Storage &amp; Stability:</b>	Store at -80°C for up to 1 year. Upon initial thaw, prepare working aliquots and store at -80°C. <b>Avoid repeated freeze-thaw cycles.</b>		
<b>Certification:</b>	Prepared from plasma shown to be non-reactive for HBsAg, anti-HCV, anti-HBc, and negative for anti-HIV 1 & 2 by FDA approved tests.		



1. Human IgE (5 µg) R  
2. Human IgE (10 µg) R  
3. Human IgE (20 µg) R  
4. Molecular Weight Markers  
5. Human IgE (5 µg) NR  
6. Human IgE (10 µg) NR  
7. Human IgE (20 µg) NR

**NOT FOR HUMAN USE. FOR RESEARCH ONLY. NOT FOR DIAGNOSTIC OR THERAPEUTIC USE.**



**Cell Sciences®**  
65 Parker Street  
Unit 11  
Newburyport, MA 01950

Toll Free: 888-769-1246  
Phone: 978-572-1070  
Fax: 978-992-0298

E-mail: [info@cellsciences.com](mailto:info@cellsciences.com)  
Website: [www.cellsciences.com](http://www.cellsciences.com)