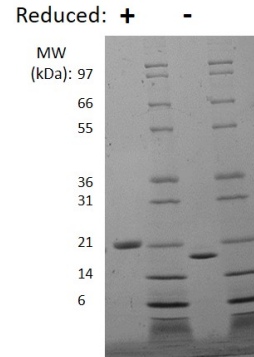
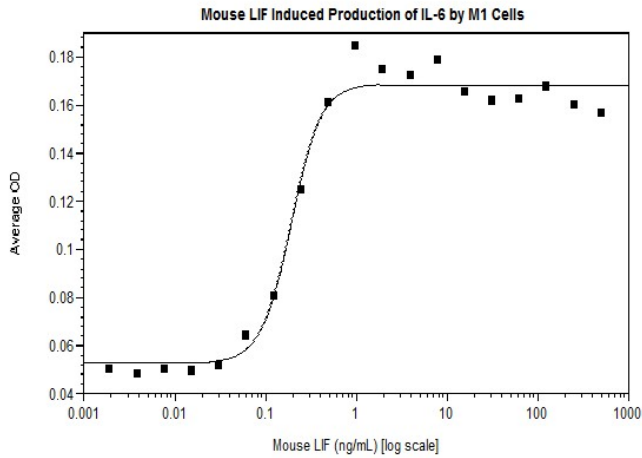


Lif

Recombinant Mouse LIF

Catalog No.	CSI20150A CSI20150B CSI20150C	Quantity:	5 µg 25 µg 1.0 mg
Alternate Names:	Leukemia inhibitory factor, Lif		
Description:	Leukemia Inhibitory Factor (LIF) is a lymphoid factor which promotes long-term maintenance of embryonic stem cells by suppressing spontaneous differentiation. LIF has a number of other activities including cholinergic neuron differentiation, control of stem cell pluripotency, bone and fat metabolism, mitogenesis of certain factor dependent cell lines, and promotion of megakaryocyte production <i>in vivo</i> .		
Gene ID:	16878		
UniProt ID:	P09056		
Source:	<i>E. coli</i>		
Molecular Weight:	20 kDa (181 aa) monomer		
Formulation:	Lyophilized from a sterile filtered aqueous solution containing 0.1% Trifluoroacetic Acid (TFA).		
Purity:	≥ 95% by reducing and non-reducing SDS-PAGE		
Endotoxin Level:	≤ 0.1 EU/µg by kinetic LAL analysis		
Biological Activity:	ED ₅₀ ≤ 1.0 ng/ml, determined by dose-dependent induction of IL-6 in mouse M1 cells.		
Specific Activity:	≥ 1.0 x 10 ⁶ units/mg		
Amino Acid Sequence:	MSPLPITPVN ATCAIRHPCH GNLMNQIKNQ LAQLNGSANA LFISYYTAQG EPPFNVEKL CAPNMTDFPS FHGNGTEKTK LVELYRMVAY LSASLTNITR DQKVLNPTAV SLQVKLNATI DVMRGLLSNV LCRLCNKYRV GHVDVPPVPD HSDKEAFQRK KLGCQLLGTY KQVISVVVQA F		
Reconstitution:	Centrifuge vial prior to opening. Add sterile 10 mM acetic acid to a concentration of 0.1 mg/ml. DO NOT VORTEX. Allow several minutes for complete reconstitution. Further dilutions should be made in appropriate buffered solutions.		
Storage & Stability:	Lyophilized product is stable at room temperature for shipping purposes. Upon receipt, store at -20°C to -80°C for up to 1 year. Upon reconstitution, the preparation is stable for up to one month at 2-8°C. For long term storage, prepare working aliquots and store at -20 to -80°C. For maximal stability, dilute to working aliquots in a 0.1% BSA solution. Avoid repeated freeze-thaw cycles.		





Mouse LIF Gel

Figure: 1 ug in each lane (-) non-reducing conditions and (+) reducing conditions in a 4-20% Tris-Glycine gel, stained with Coomassie Blue. Mouse LIF has a predicted MW of 20.0 kDa.

NOT FOR HUMAN USE. FOR RESEARCH ONLY. NOT FOR DIAGNOSTIC OR THERAPEUTIC USE.



Cell Sciences®
65 Parker Street
Unit 11
Newburyport, MA 01950

Toll Free: 888-769-1246
Phone: 978-572-1070
Fax: 978-992-0298

E-mail: info@cellsciences.com
Website: www.cellsciences.com