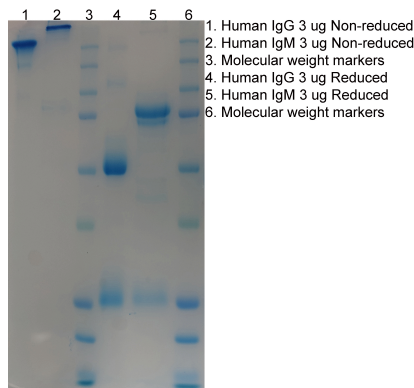


IGHM

Native Human IgM, Plasma

Catalog No.	CSI19845A CSI19845B	Quantity:	5 mg 10 mg
Description:	IgM is found in normal plasma at a concentration of 1.2 to 4.0 mg/ml. It is the first immunoglobulin produced during the immune response, the first antibody in neonates, and is involved in pathogenesis of autoimmune diseases. A diminished level of IgM is associated with Wiskott-Aldrich syndrome.		
UniProt ID:	P01871		
Gene ID:	3507		
Source:	Human Plasma		
Molecular Weight:	950 kDa		
Formulation:	0.05M Sodium Phosphate; 0.2M NaCl; 0.05% Azide; pH 8.0		
Purity:	>95.0% as determined by SDS-PAGE analysis Heavy chain isotype confirmed by rapid lateral flow isotyping kit.		
Purification:	Affinity chromatography		
Concentration:	≥ 1.0 mg/ml, lot specific		
Extinction Coefficient:	$E^{0.1\%}_{280\text{nm}} = 1.18$		
Storage & Stability:	Store at -80°C for up to 1 year. Upon initial thaw, prepare working aliquots and store at -80°C. Avoid repeated freeze-thaw cycles.		
Certification:	Prepared from plasma shown to be non reactive for HbsAG, anti-HCV, anti-HBc, and negative for anti-HIV 1 & 2 by FDA approved tests.		



NOT FOR HUMAN USE. FOR RESEARCH ONLY. NOT FOR DIAGNOSTIC OR THERAPEUTIC USE.

