

## IGHD

### Native Human IgD, Plasma

<b>Catalog No.</b>	CSI19838A	<b>Quantity:</b>	25 µg
	CSI19838B		100 µg

**Description:** IgD was first identified in 1965, and like other immunoglobulins, exists as both secreted and membrane forms. Its level in plasma is low with a mean concentration of 30 ug/ml. IgD is present in large quantities on the surface membrane of a majority of human circulating B lymphocytes. IgD enhances humoral immune responses through its induction of IgD-receptor expression on T lymphocytes.

**UniProt ID:** P01880

**Gene ID:** 3495

**Source:** Human plasma

**Purity:** >95% by SDS-PAGE analysis

**Molecular Weight:** 185 kDa

**Concentration:** ≥ 1.0 mg/ml, lot specific

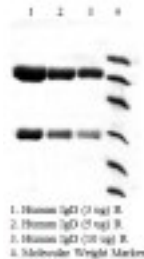
**Extinction Coefficient:**  $E_{280\text{nm}}^{0.1\%} = 1.7$

**Formulation:** 0.01M Tris-HCl, 0.2M NaCl, 0.05% Sodium Azide, pH 8.0

**Application Notes:** The optimal concentration should be determined by the user for each specific application.

**Storage & Stability:** Store at -80°C for up to 1 year. Upon initial thaw, prepare working aliquots and store at -80°C. **Avoid repeated freeze-thaw cycles.**

**Certification:** Prepared from plasma shown to be non reactive for HbsAG, anti-HCV, anti-HBc, and negative for anti-HIV 1 & 2 by FDA approved tests.



**NOT FOR HUMAN USE. FOR RESEARCH ONLY. NOT FOR DIAGNOSTIC OR THERAPEUTIC USE.**



**Cell Sciences®**  
65 Parker Street  
Unit 11  
Newburyport, MA 01950

Toll Free: 888-769-1246  
Phone: 978-572-1070  
Fax: 978-992-0298

E-mail: [info@cellsciences.com](mailto:info@cellsciences.com)  
Website: [www.cellsciences.com](http://www.cellsciences.com)