

IGHA1

Native Human IgA, Plasma

Catalog No.	CSI19835A	Quantity:	1 mg
	CSI19835B		10 mg

Description: Immunoglobulin A (IgA) is the most abundant immunoglobulin in body fluids and the second most abundant immunoglobulin in plasma, found at a concentration of 0.4 to 2.2 mg/ml. It plays a very important role in the first specific defense against natural infection. Secretory IgA differs from serum IgA in that it contains two additional peptides: the secretory component and the J chain.

UniProt ID: P01876

Gene ID: 3493

Source: Human Plasma

Molecular Weight: 170 kDa

Formulation: 100 mM Tris-HCl, pH 8.0, with 100 mM NaCl and 0.05% Na₃N

Purity: >95% by SDS-PAGE analysis

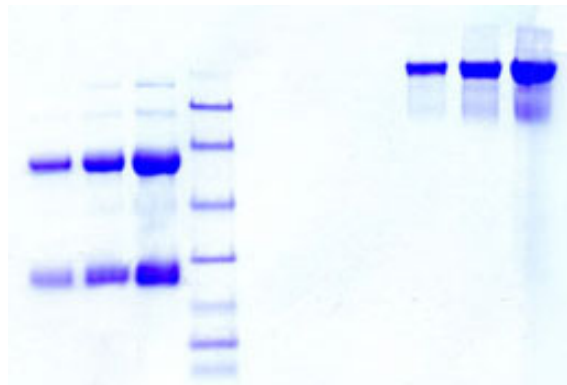
Concentration: ≥ 1.0 mg/ml, lot specific

Extinction Coefficient: $E^{0.1\%}_{280\text{nm}} = 1.32$

Storage & Stability: Store at -80°C for up to 1 year. Upon initial thaw, prepare working aliquots and store at -80°C. **Avoid repeated freeze-thaw cycles.**

Certification: Prepared from plasma shown to be non-reactive for HBVsAG, anti-HCV, anti-HBc, and negative for anti-HIV 1 & 2 by FDA approved tests.

SDS-PAGE, (L) reduced & (R) non-reduced



NOT FOR HUMAN USE. FOR RESEARCH ONLY. NOT FOR DIAGNOSTIC OR THERAPEUTIC USE.



Cell Sciences®
65 Parker Street
Unit 11
Newburyport, MA 01950

Toll Free: 888-769-1246
Phone: 978-572-1070
Fax: 978-992-0298

E-mail: info@cellsciences.com
Website: www.cellsciences.com