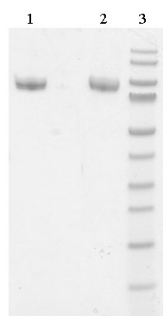


KLKB1

Native Human Prekallikrein, Plasma

Catalog No.	CSI19813A	Quantity:	1.0 mg
	CSI19813B		5.0 mg
Alternate Names:	Plasma prekallikrein, PKK, Kallikrein B1, Fletcher Factor, Kininogenin		
Description:	Native Human Prekallikrein from human plasma is the zymogen precursor of the plasma serine protease kallikrein. Human Prekallikrein is a single chain gamma globulin glycoprotein that participates in the early phase of contact activation, kinin formation and fibrinolysis. Prekallikrein shows no reduction upon incubation with 2-mercaptoethanol.		
UniProt ID:	P03952		
Gene ID:	3818		
Source:	Human plasma		
Molecular Weight:	86 kDa		
Formulation:	4 mM Sodium Acetate, 0.15 M NaCl, pH 5.3		
Purity:	>95% by SDS-PAGE analysis		
Extinction Coefficient:	$E^{0.1\%}_{280nm} = 1.17$		
Concentration:	≥ 1.0 mg/mL, lot specific		
Specific Activity:	Plasma equivalency units/mg, ~28 PEU/mg, lot specific		
Storage & Stability:	Store at -80°C for up to 1 year. Upon initial thaw, prepare working aliquots and store at -80°C. Avoid repeated freeze-thaw cycles.		
Statement:	Prepared from plasma found negative by FDA accepted methods for Anti-HIV1/2, Anti-HTLV I & II, HBsAg, Anti-HCV, Syphilis, HBC Ab, HIV-1 p24 Ag or HIV-1 RNA, HCV RNA and HBV RNA. Donors are screened for CJD (Creutzfeldt-Jakob Disease).		



1. Human Prekallikrein (3 ug) NR
 2. Human Prekallikrein (3 ug) R
 3. Molecular Weight Markers

NOT FOR HUMAN USE. FOR RESEARCH ONLY. NOT FOR DIAGNOSTIC OR THERAPEUTIC USE.