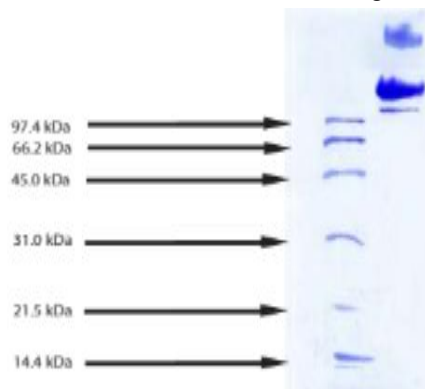


## Native Human Plasma LDL, Cell Culture Grade

<b>Catalog No.</b>	CSI19806A CSI19806B	<b>Quantity:</b>	1 mg 5 mg
<b>Alternate Names:</b>	Low density lipoproteins		
<b>Description:</b>	In a normal fasting individual, low density lipoprotein concentrations range from 2.0 - 3.5 g/L. LDL constitutes 50% of the total lipoprotein mass in plasma and is the major carrier of cholesterol and cholesteryl esters. LDL levels strongly correlate with coronary heart disease.		
<b>Source:</b>	Fresh human plasma, not frozen		
<b>Molecular Weight:</b>	2,300 kDa		
<b>Density:</b>	1.019-1.063 g/ml		
<b>Composition:</b>	78-80% lipid, 20-22% protein		
<b>Purity:</b>	>95% by SDS-PAGE Single arc by IEP against antisera to whole human serum. Essentially free of other plasma lipoproteins as determined by electrophoresis using Fat		
<b>Formulation:</b>	150 mM NaCl, 0.01% EDTA, pH 7.4		
<b>Endotoxin:</b>	< 0.01 EU/ $\mu$ g by Pyrosate LAL clot test		
<b>Sterility:</b>	Using Turbidity Growth/No Growth as the Indicator, Thioglycollate Broth (THIO) for yeast and mold growth, Tryptic Soy Broth (TSB) for bacterial growth		
<b>Storage &amp; Stability:</b>	Store at 2-8°C. Open under sterile conditions. Use within 1 week after opening. <b>DO NOT FREEZE</b>		
<b>Infectious Disease Statement:</b>	Prepared from fresh, non-frozen plasma shown to be non reactive for HBsAg, anti-HCV, anti-HBc, and negative for anti-HIV 1 & 2 by FDA-required tests.		

SDS-PAGE: 12% Tris-HCL gel



**NOT FOR HUMAN USE. FOR RESEARCH ONLY. NOT FOR DIAGNOSTIC OR THERAPEUTIC USE.**



# cellsciences.com



**Cell Sciences®**  
65 Parker Street  
Unit 11  
Newburyport, MA 01950

Toll Free: 888-769-1246  
Phone: 978-572-1070  
Fax: 978-992-0298

E-mail: [info@cellsciences.com](mailto:info@cellsciences.com)  
Website: [www.cellsciences.com](http://www.cellsciences.com)