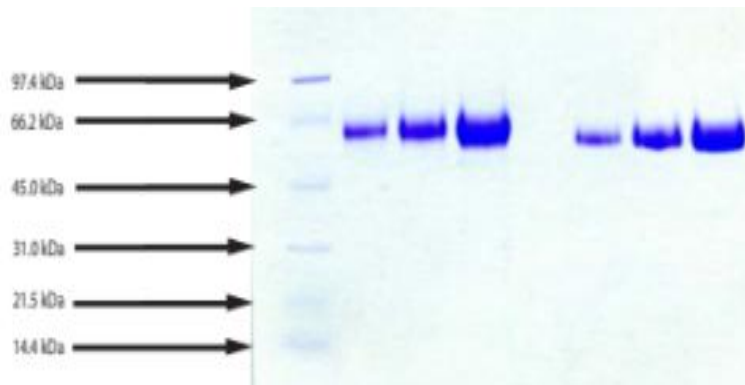


## KNG1

### Native Human Kininogen LMW, Plasma

<b>Catalog No.</b>	CSI19805A CSI19805B	<b>Quantity:</b>	100 µg 1.0 mg
<b>Alternate Names:</b>	Kininogen-1		
<b>Description:</b>	Low Molecular Weight Kininogen is involved in blood pressure regulation since it is an endogenous protein substrate for tissue kallikrein. Proteolytic cleavage by kallikrein releases vasoactive bradykinin from LMW kininogen. In addition, LMW kininogen, like HMW kininogen, is a major extracellular cysteine protease inhibitor.		
<b>UniProt ID:</b>	P01042		
<b>Gene ID:</b>	3827		
<b>Source:</b>	Human plasma		
<b>Molecular Weight:</b>	65 kDa		
<b>Formulation:</b>	Lyophilized from 10 mM Sodium Acetate, 200 mM NaCl, pH 5.5.		
<b>Purity:</b>	≥ 95% by SDS-PAGE analysis.		
<b>Extinction Coefficient:</b>	$E^{0.1\%}_{280\text{nm}} = 0.59$		
<b>Reconstitution:</b>	Reconstitute to 0.1-1.0 mg/ml, aliquot and freeze unused portion.		
<b>Storage &amp; Stability:</b>	Store at -80°C for up to 1 year. Upon reconstitution, prepare working aliquots and store at -80°C. <b>Avoid repeated freeze-thaw cycles.</b>		
<b>Certification:</b>	The protein is derived from plasma that has been shown to be non reactive for HbsAG, anti-HCV, anti-HBc, and negative for anti-HIV 1 & 2 by FDA approved tests.		

SDS-PAGE: 12% Tris Glycine gel



**NOT FOR HUMAN USE. FOR RESEARCH ONLY. NOT FOR DIAGNOSTIC OR THERAPEUTIC USE.**