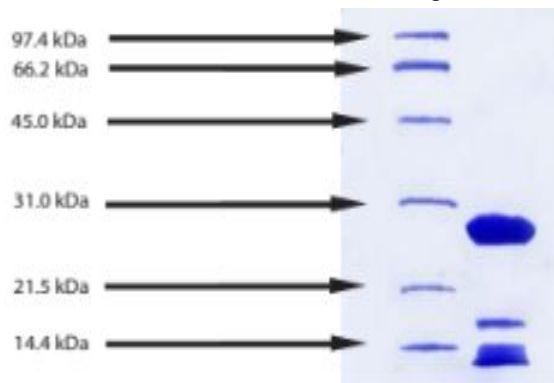


Native Human Plasma HDL, Cell Culture Grade

Catalog No.	CSI19802A CSI19802B	Quantity:	1 mg 5 mg
Alternate Names:	High density lipoproteins		
Description:	HDL is the vehicle for reversed cholesterol transport and esterification, serving as a scavenger for free cholesterol during intravascular catabolism of lipoproteins. HDL levels are inversely correlated with coronary heart disease. In a normal fasting individual, HDL concentrations range from 1.0-2.0 g/L.		
Source:	Fresh human plasma, not frozen		
Molecular Weight:	175 kDa - 360 kDa		
Density:	1.063-1.210 g/ml		
Composition:	55-45% lipid, 45-55% protein		
Purity:	>95% by SDS-PAGE Single arc by IEP against antisera to whole human serum. Essentially free of other plasma lipoproteins as determined by electrophoresis using Fat		
Formulation:	150 mM NaCl, 0.01% EDTA, pH 7.4		
Endotoxin:	< 0.01 EU/ μ g by Pyrosate LAL clot test		
Sterility:	Using Turbidity Growth/No Growth as the Indicator, Thioglycollate Broth (THIO) for yeast and mold growth, Tryptic Soy Broth (TSB) for bacterial growth		
Storage & Stability:	Store at 2-8°C. Open under sterile conditions. Use within 1 week after opening. DO NOT FREEZE		
Infectious Disease Statement:	Prepared from fresh, non-frozen plasma shown to be non reactive for HBsAg, anti-HCV, anti-HBc, and negative for anti-HIV 1 & 2 by FDA-required tests.		

SDS-PAGE: 12% Tris-HCL gel



NOT FOR HUMAN USE. FOR RESEARCH ONLY. NOT FOR DIAGNOSTIC OR THERAPEUTIC USE.

cellsciences.com



Cell Sciences®
65 Parker Street
Unit 11
Newburyport, MA 01950

Toll Free: 888-769-1246
Phone: 978-572-1070
Fax: 978-992-0298

E-mail: info@cellsciences.com
Website: www.cellsciences.com