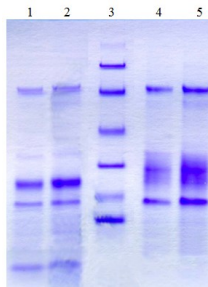


## CTSL

### Native Human Cathepsin L, Liver

<b>Catalog No.</b>	CSI19795A CSI19795B	<b>Quantity:</b>	25 µg 100 µg
<b>Alternate Names:</b>	Pro-cathepsin L, Cathepsin L1, Major excreted protein, MEP		
<b>Description:</b>	<p>The most powerful of the lysosomal proteases. Cathepsin L has a higher specific activity than cathepsin B and H in the degradation of a variety of physiological protein substrates, but has little activity on Z-Arg-Arg-NHMec, and no peptidyl-dipeptidase activity. Specificity close to that of papain.</p> <p>The level of cathepsin L is a strong predictor of relapse and survival following treatment of a primary breast tumor.</p>		
<b>UniProt ID:</b>	P07711		
<b>Gene ID:</b>	1514		
<b>Source:</b>	Human liver		
<b>Molecular Weight:</b>	25-29 kDa		
<b>Formulation:</b>	20 mM Malonate, 400 mM NaCl, 1 mM EDTA, pH 5.5		
<b>Purity:</b>	>95% by SDS-PAGE analysis		
<b>Concentration:</b>	≥ 1.0 mg/ml, lot specific		
<b>Extinction Coefficient:</b>	$E^{0.1\%}_{280\text{nm}} = 1.28$		
<b>Biological Activity:</b>	One unit is defined as the amount of enzyme that hydrolyzes one micromole of Z-Phe-Arg-AFC per minute at 25°C using 400 mM Na Acetate, pH 5.5 with 4 mM EDTA and 8 mM DTT as the activation buffer in the presence of Brij.		
<b>Specific Activity:</b>	> 1 unit per mg protein		
<b>Storage &amp; Stability:</b>	Store at -80°C for up to 1 year. Upon initial thaw, prepare working aliquots and store at -80°C. <b>Avoid repeated freeze-thaw cycles.</b>		
<b>Infectious Disease Statement:</b>	Prepared from tissue shown to be non reactive for HbsAG, anti-HCV, anti-HBc, and negative for anti-HIV 1 & 2 by FDA approved tests.		



1. Human Cathepsin L (4 ug) NR  
2. Human Cathepsin L (7 ug) NR  
3. Molecular Weight Markers  
4. Human Cathepsin L (4 ug) R  
5. Human Cathepsin L (7 ug) R

**NOT FOR HUMAN USE. FOR RESEARCH ONLY. NOT FOR DIAGNOSTIC OR THERAPEUTIC USE.**



**Cell Sciences®**  
65 Parker Street  
Unit 11  
Newburyport, MA 01950

Toll Free: 888-769-1246  
Phone: 978-572-1070  
Fax: 978-992-0298

E-mail: [info@cellsciences.com](mailto:info@cellsciences.com)  
Website: [www.cellsciences.com](http://www.cellsciences.com)

# cellsciences.com



**Cell Sciences®**  
65 Parker Street  
Unit 11  
Newburyport, MA 01950

Toll Free: 888-769-1246  
Phone: 978-572-1070  
Fax: 978-992-0298

E-mail: [info@cellsciences.com](mailto:info@cellsciences.com)  
Website: [www.cellsciences.com](http://www.cellsciences.com)