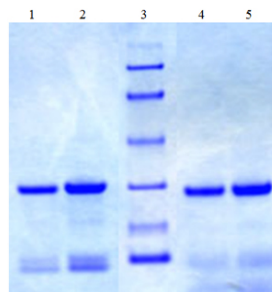


CTSD

Native Human Cathepsin D, Liver

Catalog No.	CSI19793A CSI19793B	Quantity:	25 µg 100 µg
Alternate Names:	Cathepsin D, CTSD		
Description:	Cathepsin D is an estrogen-regulated protein associated with tissue breakdown. Levels of cathepsin D have been positively correlated with recurring breast cancers of both node-negative and node-positive types. Additionally cathepsin D has been associated with amyloid formation in Alzheimer's plaques. As cathepsin D activity is increased by cigarette smoke, the enzyme may contribute to lung tissue damage in smokers.		
UniProt ID:	P07339		
Source:	Human liver		
Molecular Weight:	42 kDa		
Formulation:	Lyophilized from 2 mM sodium phosphate, pH 6.5.		
Purity:	≥ 95% by SDS-PAGE analysis		
Extinction Coefficient:	$E^{0.1\%}_{280nm} = 1.0$		
Biological Activity:	One unit is defined as the amount of enzyme that digests hemoglobin-releasing peptides which are soluble in 10% TCA. The reaction is measured by an increase of an A_{280} of 1.0 per 60 minutes at 37°C. Substrate: acid denatured hemoglobin, pH 1.8 (0.2% in reaction mixture). Buffer: 100 mM formate, pH 3.3.		
Specific Activity:	≥300 units/mg.		
Reconstitution:	Centrifuge vial prior to opening. Add deionized water to 0.1-1.0 mg/ml.		
Storage & Stability:	Store at -80°C for up to 1 year. Upon reconstitution, prepare working aliquots and store at -80°C. Avoid repeated freeze-thaw cycles.		
Infectious Disease Statement:	Prepared from tissue shown to be non reactive for HbsAG, anti-HCV, anti-HBc, and negative for anti-HIV 1 & 2 by FDA approved tests.		



1. Human Cathepsin D (4 ug) R
2. Human Cathepsin D (7 ug) R
3. Molecular Weight Markers
4. Human Cathepsin D (4 ug) NR
5. Human Cathepsin D (7 ug) NR

NOT FOR HUMAN USE. FOR RESEARCH ONLY. NOT FOR DIAGNOSTIC OR THERAPEUTIC USE.



Cell Sciences®
65 Parker Street
Unit 11
Newburyport, MA 01950

Toll Free: 888-769-1246
Phone: 978-572-1070
Fax: 978-992-0298

E-mail: info@cellsciences.com
Website: www.cellsciences.com

cellsciences.com



Cell Sciences®
65 Parker Street
Unit 11
Newburyport, MA 01950

Toll Free: 888-769-1246
Phone: 978-572-1070
Fax: 978-992-0298

E-mail: info@cellsciences.com
Website: www.cellsciences.com