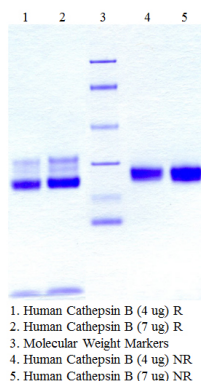


CTSB

Native Human Cathepsin B, Liver

Catalog No.	CSI19792A CSI19792B	Quantity:	25 µg 100 µg
Alternate Names:	Cathepsin B, APP secretase, APPS, cathepsin B1		
Description:	Cathepsin B, a cysteine proteinase, is located in lysosomes and is involved in tissue degradation and restructuring. Specifically, cathepsin B is believed to be involved in the intracellular digestion of extracellular proteins taken up by endocytosis.		
UniProt ID:	P07858		
Gene ID:	1508		
Source:	Human liver		
Molecular Weight:	27.5 kDa		
Formulation:	50 mM Sodium Acetate, 1 mM EDTA, pH 5.0.		
Purity:	>95% by SDS-PAGE analysis		
Concentration:	≥ 1.0 mg/ml, lot specific		
Extinction Coefficient:	$E^{0.1\%}_{280\text{nm}} = 2.0$		
Biological Activity:	One unit is defined as the amount of enzyme that hydrolyzes one µmole of Z-Arg-Arg-beta-naphthylamide per minute at 40°C, using 100 mM Na/K phosphate, pH 6.0, with 1.33 mM EDTA and 2 mM DTT as the activation buffer.		
Specific Activity:	≥ 200 units/mg.		
Storage & Stability:	Store at -80°C for up to 1 year. Upon initial thaw, prepare working aliquots and store at -80°C. Avoid repeated freeze-thaw cycles.		
Infectious Disease Statement:	Prepared from tissue shown to be non reactive for HbsAG, anti-HCV, anti-HBc, and negative for anti-HIV 1 & 2 by FDA approved tests.		



cellsciences.com

NOT FOR HUMAN USE. FOR RESEARCH ONLY. NOT FOR DIAGNOSTIC OR THERAPEUTIC USE.



Cell Sciences®
65 Parker Street
Unit 11
Newburyport, MA 01950

Toll Free: 888-769-1246
Phone: 978-572-1070
Fax: 978-992-0298

E-mail: info@cellsciences.com
Website: www.cellsciences.com