

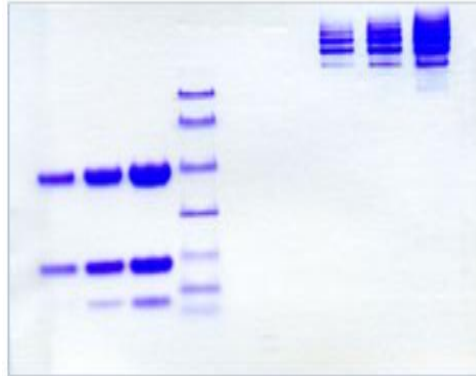
HP

Native Human Haptoglobin Mixed Type, Low Endotoxin

Catalog No.	CSI19769A CSI19769B	Quantity:	1.0 mg 5.0 mg
Alternate Names:	Haptoglobin, Zonulin		
Description:	<p>Haptoglobin functions to bind free hemoglobin, released from erythrocytes, which allows degradative enzymes to access the hemoglobin, preventing loss of iron through the kidneys. Haptoglobin level is used to screen and monitor intravascular hemolytic anemia.</p> <p>Haptoglobin consists of two alpha and two beta chains, connected by disulfide bridges. The chains originate from a common precursor protein, which is proteolytically cleaved during protein synthesis. Hp exists in two allelic forms in the human population, so-called Hp1 and Hp2. Three phenotypes of Hp are found in humans: Hp1-1, Hp2-1, and Hp2-2. Plasma levels of haptoglobin are highest in individuals with Hp1-1 > Hp2-1 > Hp2-2 individuals. Hp1-1 is the most effective at binding hemoglobin, and Hp2-2 is the least effective. There is a correlation between recurring epileptic seizures and the Hp2-2 phenotype.</p>		
UniProt ID:	P00738		
Source:	Human Plasma		
Molecular Weight:	Hp 1-1: 86 kDa Hp 2-1: 200 kDa Hp 2-2: 400 kDa		
Formulation:	Lyophilized salt free solid.		
Purity:	> 95% by SDS-PAGE analysis		
Extinction Coefficient:	$E^{0.1\%}_{280\text{nm}} = 1.20$		
Endotoxin:	< 0.002 EU/ μ g by PyroGene™ rFC assay		
Storage & Stability:	Store unopened at -20°C to -80°C for up to 1 year. For long term storage, aliquot and store at -20°C to -80°C. Avoid repeated freeze-thaw cycles.		
Infectious Disease Statement:	Prepared from plasma shown to be non reactive for HBsAg, anti-HCV, anti-HBc, and negative for anti-HIV 1 & 2 by FDA-required tests.		



SDS-PAGE reduced & non--reduced



NOT FOR HUMAN USE. FOR RESEARCH ONLY. NOT FOR DIAGNOSTIC OR THERAPEUTIC USE.



Cell Sciences®
65 Parker Street
Unit 11
Newburyport, MA 01950

Toll Free: 888-769-1246
Phone: 978-572-1070
Fax: 978-992-0298

E-mail: info@cellsciences.com
Website: www.cellsciences.com