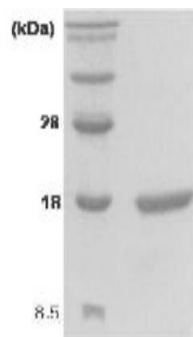


KITLG

Recombinant Human Kit Ligand / SCF (aa 26-189)

| | | | |
|---------------------------------|---|------------------|------------------|
| Catalog No. | CSI15667A CSI15667B | Quantity: | 100 µg 500 µg |
| Alternate Names: | Kit ligand, Mast cell growth factor, MGF, Stem cell factor, SCF, c-Kit ligand | | |
| Description: | Stem Cell Factor (SCF) is a glycoprotein ligand for the receptor-type protein-tyrosine kinase KIT. SCF has an essential role in the regulation of cell survival and proliferation, hematopoiesis, stem cell maintenance, gametogenesis, mast cell development, migration and function, and in melanogenesis. SCF stimulates the proliferation of mast cells and is able to augment the proliferation of both myeloid and lymphoid hematopoietic progenitors in bone marrow culture. It also mediates cell-cell adhesion and acts synergistically with other cytokine. | | |
| Concentration: | 1 mg/ml, determined by Bradford assay | | |
| UniProt ID: | P21583 | | |
| Source: | Expressed in <i>E. coli</i> , no tag | | |
| Molecular Weight: | 18.5 kDa (165 aa), confirmed by MALDI-TOF | | |
| Formulation: | Phosphate buffered saline, pH 7.4 | | |
| Purity: | > 95% by SDS-PAGE under reducing conditions | | |
| Endotoxin Level: | < 1 EU/1ug of protein, determined by LAL method | | |
| Amino Acid Sequence: | MEGICRNRVT NNVKDVTKLV ANLPKDYMIT LKYVPGMDVL PSHCWISEMV VQLSDSLTDL LDKFSNISEG LSNYSIIDKL VNIVDDLVEC VKENSSKDLK KSFKSPEPRL FTPEEFFRIF NRSIDAFKDF VVASETSDCV VSSTLSPEKD SRVSVTKPFM LPPVA | | |
| Storage & Stability: | Can be stored at 2-8°C short term for 1 week. For long term storage, aliquot and store at -20°C or -80°C. Avoid repeated freezing and thawing cycles. | | |



15% SDS-PAGE (3µg)

NOT FOR HUMAN USE. FOR RESEARCH ONLY. NOT FOR DIAGNOSTIC OR THERAPEUTIC USE.

