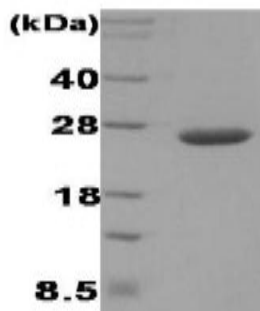


dsbC

Recombinant Disulfide-bond Isomerase C

Catalog No.	CSI15620A CSI15620B	Quantity:	100 µg 500 µg
Alternate Names:	Thiol:disulfide interchange protein dsbC, xprA		
Description:	Recombinant Disulfide Oxidoreductase (rDsbA), produced from E.Coli is a periplasmic protein and thioredoxin superfamily member which introduces disulfide bonds directly into substrate proteins by donating the disulfide bond in its active-site Cys30-Pro31-His32-Cys33 to a pair of cysteines in substrate proteins. DsbA consists of 208 amino acids containing signal peptide(1-19 amino acids). Recombinant DsbA (residues 20-208) was expressed in <i>E. coli</i> and purified by using conventional chromatography techniques.		
Concentration:	1 mg/ml (determined by Bradford assay)		
GeneID:	947363		
Protein Accession No:	YP_00145967		
Source:	<i>E. coli</i>		
Molecular Weight:	23.4kDa (216aa), confirmed by MALDI-TOF		
Formulation:	Liquid. In 20 mM HepesI buffer (pH 7.5) containing 2 mM EDTA		
Purity:	> 95% by SDS - PAGE		
Amino Acid Sequence:	DDAAIQQTLA KMGIKSSDIQ PAPVAGMKTV LTNSGVLYIT DDGKHIIQGP MYDVSGTAPV NVTNKMLLKQ LNALEKEMIV YKAPQEKHVI TVFTDITCGY CHKLHEQMAD YNALGITVRY LAFPRQGLDS DAEKEMKAIW CAKDKNKAFD DVMAGKSVAP ASCDVDIADH YVLGVQLGVS GTPAVVLSNG TLVPGYQPPK EMKEFLDEHQ KMTSGK		
Storage & Stability:	Can be stored at +4°C short term (1-2 weeks). For long term storage, aliquot and store at -20°C or -80°C. Avoid repeated freezing and thawing cycles.		



15% SDS-PAGE (3ug)

NOT FOR HUMAN USE. FOR RESEARCH ONLY. NOT FOR DIAGNOSTIC OR THERAPEUTIC USE.

