

HSPB1

Mouse Anti-Human HSP27 Clone 2A5 mAb

Catalog No.	CS115584A CS115584B	Quantity:	50 µl 100 µl
Alternate Names:	CMT2F, HMN2B, HS.76067, HSP27, HSP28, Hsp25, SRP27, estrogen-regulated 24 kDa protein, heat shock 27kD protein 1, heat shock protein beta-1, stress-responsive protein 27		
Description:	Hsp27 (also known as the Estrogen-Regulated 24k protein, and hsp 28) is a member of the mammalian small heat shock protein family. Hsp27 is expressed constitutively in many tissues and its expression is increased to high levels after various types of stress including elevated temperatures, toxic metals, drugs and oxidants. Also, Hsp27 is phosphorylated in vivo on three phosphorylation sites (Ser15, Ser78 and Ser82) by protein kinases including MAPKAP kinase 2 and the stress-activated protein kinase SAPk2 (p38). Hsp27 forms a multimeric complex within cells, and its primary chaperone function, like other small Hsps, appears to be the stabilization of denatured or aggregated proteins in a refolding competent state.		
Concentration:	1 mg/ml		
Gene ID:	3315		
Protein Accession No.:	NP_001531		
Host:	Mouse		
Immunogen:	Recombinant human Hsp27 (1-205 aa) purified from <i>E. coli</i>		
Isotype:	Mouse IgG ₁ , heavy chain and κ light chain		
Clone:	Anti-human Hsp27 mAb, clone 2A5, is derived from hybridization of mouse SP2/0 myeloma cells with spleen cells from BALB/c mice immunized with a recombinant human Hsp27 protein.		
Conjugate:	Unconjugated		
Formulation:	Liquid. Supplied in Phosphate-Buffered Saline (pH 7.4) with 0.1% Sodium Azide. Precaution: Sodium azide is a poisonous and hazardous substance which should be handled by trained staff only.		
Purification:	By protein-G affinity chromatography		
Cross-Reactivity:	Human		
Applications:	ELISA, WB (Cell lysate), Immunohistochemistry		

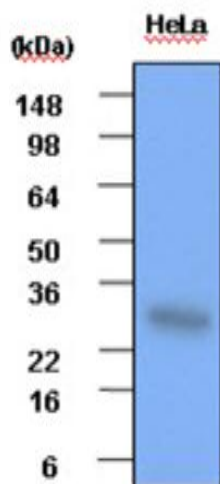


Application Notes: The antibody has been tested by ELISA, Western blot and immunohistochemistry analysis to assure specificity and reactivity. Since application varies, however, each investigation should be titrated by the reagent to obtain optimal results. Recommended dilution range for Western blot is 1:1,000~1:2,000 and immunohistochemistry analysis is 1:50~100. Recommended starting dilution for Western blot is 1:1,000 and Immunohistochemistry is 1:50.

Storage & Stability: Can be stored at +4°C. For long term storage, aliquot and store at -20°C. **Avoid repeated freezing and thawing cycles.**

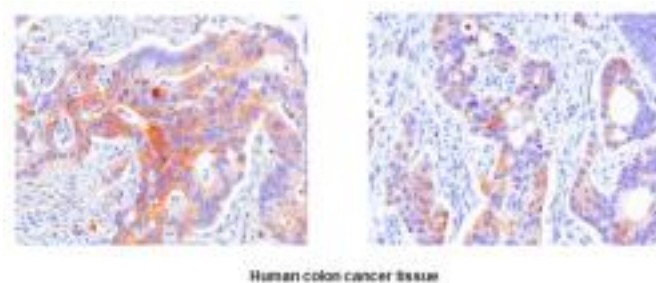
Western Blot Analysis

Cell lysates of HeLa(each 30ug) were resolved by SDS-PAGE, transferred to PVDF membrane and probed with anti-human Hsp27 (1:1,000). Proteins were visualized using a goat anti-mouse secondary antibody conjugated to HRP and an ECL detection system.



Immunohistochemistry:

Paraffin embedded sections of human colon cancer tissue were incubated with anti-human Hsp27 (1:50) for 2 hours at room temperature. Antigen retrieval was performed in 0.1M sodium citrate buffer and detected using Diaminobenzidine (DAB)



NOT FOR HUMAN USE. FOR RESEARCH ONLY. NOT FOR DIAGNOSTIC OR THERAPEUTIC USE.



Cell Sciences®
480 Neponset Street
Bldg 12A
Canton, MA 02021

Toll Free: 888-769-1246
Phone: 781-828-0610
Fax: 781-828-0542

E-mail: info@cellsciences.com
Website: www.cellsciences.com