

## ISG15

### Mouse Anti-Human ISG15 Ubiquitin-like Modifier Clone 3E5 mAb

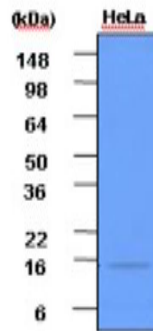
<b>Catalog No.</b>	CSI15583A CSI15583B	<b>Quantity:</b>	50 µl 100 µl
<b>Alternate Names:</b>	G1P2, IFI15, UCRP, interferon, alpha-inducible protein (clone IFI-15K), interferon-induced 17-kDa/15-kDa protein, interferon-stimulated protein, 15 kDa, ubiquitin cross-reactive protein		
<b>Description:</b>	ISG15, a 15 kDa protein encoded by an interferon stimulated gene, and its modification system play important roles in the innate immune response, regulation of interferon signaling, pregnancy, and several cancers. ISG15 is an ubiquitin-like protein containing two ubiquitin homology domains and becomes conjugated to a variety of proteins when cells are treated with type I interferon or lipopolysaccharide.		
<b>Concentration:</b>	1 mg/ml		
<b>Gene ID:</b>	9636		
<b>Host:</b>	Mouse		
<b>Immunogen:</b>	Recombinant human ISG15 (1-157 aa) purified from <i>E. coli</i>		
<b>Isotype:</b>	Mouse IgG <sub>1</sub> heavy chain and κ light chain		
<b>Clone:</b>	Anti-human ISG15 mAb, clone 3E5, is derived from hybridization of mouse SP2/0 myeloma cells with spleen cells from BALB/c mice immunized with a recombinant human ISG15 protein.		
<b>Conjugate:</b>	Unconjugated		
<b>Formulation:</b>	Liquid. Supplied in Phosphate-Buffered Saline (pH 7.4) with 0.1% Sodium Azide. <b>Precaution:</b> Sodium azide is a poisonous and hazardous substance which should be handled by trained staff only.		
<b>Purification:</b>	By protein-G affinity chromatography		
<b>Cross-Reactivity:</b>	Human		
<b>Applications:</b>	ELISA, WB (Cell lysate)		
<b>Application Notes:</b>	The antibody has been tested by ELISA and Western blot analysis to assure specificity and reactivity. Since application varies, however, each investigation should be titrated by the reagent to obtain optimal results. Recommended dilution range for Western blot analysis is 1:1,000 ~ 2,000. Recommended starting dilution is 1:1,000.		



**Storage & Stability:** Can be stored at +4°C. For long term storage, aliquot and store at -20°C. **Avoid repeated freezing and thawing cycles.**

Western Blot Analysis:

Cell lysates of HeLa (each 50ug) were resolved by SDS-PAGE, transferred to PVDF membrane and probed with anti-human ISG15 (1:1,000). Proteins were visualized using a goat anti-mouse secondary antibody conjugated to HRP and an ECL detection system



NOT FOR HUMAN USE. FOR RESEARCH ONLY. NOT FOR DIAGNOSTIC OR THERAPEUTIC USE.