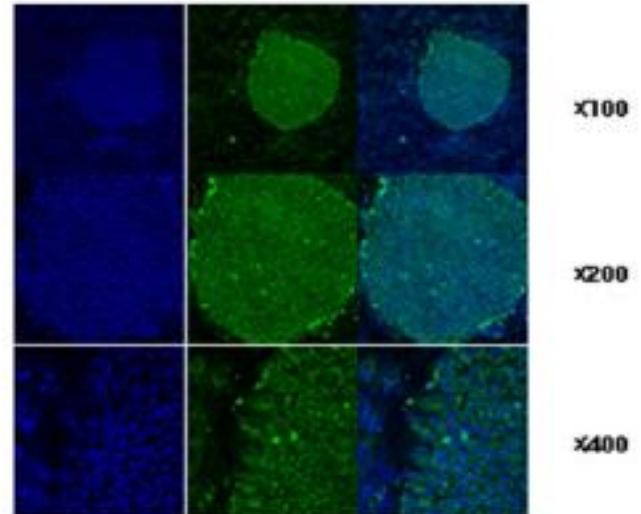
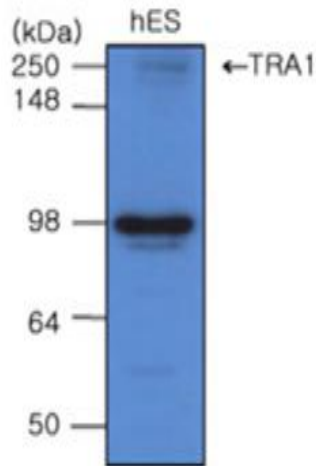




The cell lysates of hES(20ug) were resolved by SDS-PAGE, transferred to PVDF membrane and probed with anti-human TRA 1 (1:500). Proteins were visualized using a goat anti-mouse secondary antibody conjugated to HRP and an ECL detection system.

Immunofluorescence staining of human ES cell colony with monoclonal anti-human TRA1 antibody (2H3)



NOT FOR HUMAN USE. FOR RESEARCH ONLY. NOT FOR DIAGNOSTIC OR THERAPEUTIC USE.

