

## GMNN

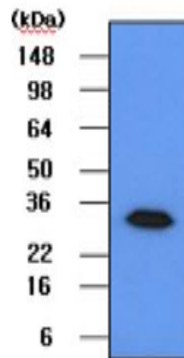
### Mouse Anti-Human Geminin Clone 2H7 mAb

<b>Catalog No.</b>	CSI15572A CSI15572B	<b>Quantity:</b>	50 µl 100 µl
<b>Alternate Names:</b>	Gem, RP3-369A17.3, geminin		
<b>Description:</b>	Geminin is a 25 kDa protein, which inhibits DNA replication and is degraded during the mitotic phase of the cell cycle. Geminin controls replication by binding to the licensing factor Cdt1, and is involved in neural differentiation. In addition, geminin directly interacts with Six3 and Hox homeodomain proteins during embryogenesis and inhibits their functions.		
<b>Concentration:</b>	1 mg/ml		
<b>Gene ID:</b>	51053		
<b>Protein Accession No.:</b>	NP_056979		
<b>Host:</b>	Mouse		
<b>Immunogen:</b>	Recombinant human Geminin (1-209 aa) purified from <i>E. coli</i>		
<b>Isotype:</b>	Mouse IgG <sub>1</sub> heavy chain and k light chain		
<b>Clone:</b>	Anti-human Geminin mAb, clone 2H7, is derived from hybridization of mouse SP2/0 myeloma cells with spleen cells from BALB/c mice immunized with a recombinant human Geminin protein.		
<b>Formulation:</b>	Liquid. Supplied in Phosphate-Buffered Saline (pH 7.4) with 0.1% Sodium azide. <b>Precaution:</b> Sodium azide is a poisonous and hazardous substance which should be handled by trained staff only.		
<b>Purification:</b>	By protein-G affinity chromatography		
<b>Cross-Reactivity:</b>	Human		
<b>Applications:</b>	ELISA, WB (Cell lysate)		
<b>Application Notes:</b>	The antibody has been tested by ELISA and Western blot analysis to assure specificity and reactivity. Since application varies, however, each investigation should be titrated by the reagent to obtain optimal results. Recommended dilution range for Western blot analysis is 1:500 ~ 1,000. Recommended starting dilution is 1:500.		



**Storage & Stability:** Can be stored at +4C. For long term storage, aliquot and store at -20C. **Avoid repeated freezing and thawing cycles.**

**Western Blot Analysis:** The 293T cell lysates (50 ug) were resolved by SDS-PAGE, transferred to PVDF membrane and probed with anti-human Geminin (1:500). Proteins were visualized using a goat anti-mouse secondary antibody conjugated to HRP and an ECL detection system.



NOT FOR HUMAN USE. FOR RESEARCH ONLY. NOT FOR DIAGNOSTIC OR THERAPEUTIC USE.