

## SERPINF1

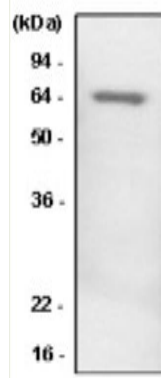
### Mouse Anti-Human Pigment Epithelium-derived Factor Clone 1C4 mAb

<b>Catalog No.</b>	CSI15570A CSI15570B	<b>Quantity:</b>	50 µl 100 µl
<b>Alternate Names:</b>	EPC-1, PEDF, PIG35, pigment epithelium-derived factor, proliferation-inducing protein 35, serine (or cysteine) proteinase inhibitor, clade F (alpha-2 antiplasmin, pigment epithelium derived factor), member 1		
<b>Description:</b>	Pigment epithelium-derived factor (PEDF) is a 50 kDa glycoprotein and member of the serpin superfamily without any activity of serine protease. PEDF is an angiogenesis inhibitor with neurotrophic properties, balances angiogenesis in the eye and blocks tumor progression. That is, in neuronal cell, PEDF is promoting cell survival and differentiation, however, when endothelial cells are exposed to PEDF, their cell migration and proliferation are inhibited, and they undergo apoptosis.		
<b>Concentration:</b>	1 mg/ml		
<b>Gene ID:</b>	5176		
<b>Protein Accession No.:</b>	NP_002606		
<b>Host:</b>	Mouse		
<b>Immunogen:</b>	Recombinant human PEDF (aa 19-418) purified from <i>E. coli</i>		
<b>Isotype:</b>	Mouse IgG <sub>1</sub> heavy chain and κ light chain		
<b>Clone:</b>	Anti-human PEDF mAb, clone 1C4, is derived from hybridization of mouse SP2/O myeloma cells with spleen cells from BALB/c mice immunized with a recombinant human PEDF protein.		
<b>Formulation:</b>	Liquid. Supplied in Phosphate-Buffered Saline (pH 7.4) with 0.1% Sodium azide. <b>Precaution:</b> Sodium azide is a poisonous and hazardous substance which should be handled by trained staff only.		
<b>Purification:</b>	By protein-G affinity chromatography		
<b>Cross-Reactivity:</b>	Human		
<b>Applications:</b>	ELISA, WB (Cell lysate)		
<b>Application Notes:</b>	The antibody has been tested by ELISA and Western blot analysis to assure specificity and reactivity. Since application varies, however, each investigation should be titrated by the reagent to obtain optimal results. Recommended dilution range for Western blot analysis is 1:500 ~ 2,000. Recommended starting dilution is 1:1,000.		



**Storage & Stability:** Can be stored at +4°C. For long term storage, aliquot and store at -20°C. **Avoid repeated freezing and thawing cycles.**

**Western Blot Analysis:** A549 cell lysate was resolved by SDS-PAGE, transferred to PVDF membrane and probed with anti-human PEDF antibody (1:1000). Protein was visualized using a goat anti-mouse secondary antibody conjugated to HRP and an ECL detection system.



**NOT FOR HUMAN USE. FOR RESEARCH ONLY. NOT FOR DIAGNOSTIC OR THERAPEUTIC USE.**

