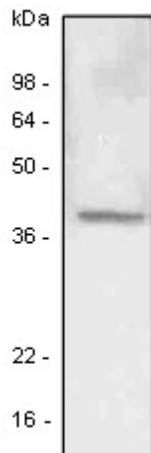


## LYVE1

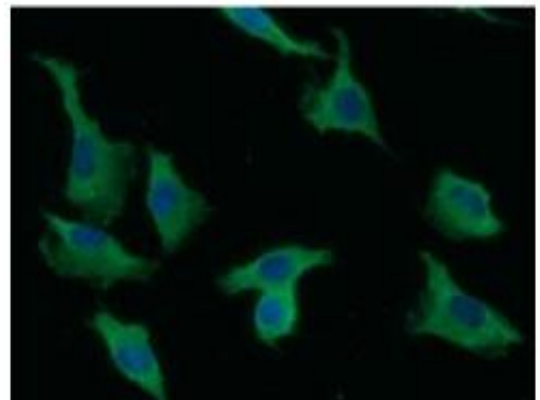
### Mouse Anti-Human LYVE-1 (Clone 4G1) mAb

<b>Catalog No.</b>	CSI15560A CSI15560B	<b>Quantity:</b>	50 µl 100 µl
<b>Alternate Names:</b>	Lymphatic vessel endothelial hyaluronic acid receptor 1, LYVE-1, Cell surface retention sequence-binding protein 1 (CRSBP-1), Extracellular link domain-containing protein 1, Hyaluronic acid receptor		
<b>Description:</b>	Lymphatic vascular endothelial hyaluronan receptor-1 (LYVE-1), a selective marker of the lymphatic endothelium, is a surface endocytic receptor for hyaluronan (HA), which is an extracellular glycosaminoglycan involved in cell adhesion and migration. HA is widely expressed on leukocytes, dendritic cells, and tumor cell, and is identified by searching expressed sequence tag (EST) databases for sequences homologous (41%) with the metastasis related CD44 molecules.		
<b>UniProt ID:</b>	Q9Y5Y7		
<b>Concentration:</b>	1.0 mg/ml by BCA assay		
<b>Specificity:</b>	Human LYVE-1		
<b>Immunogen:</b>	Recombinant human LYVE-1 (aa 25-235) expressed in <i>E. coli</i>		
<b>Isotype:</b>	Mouse IgG2b κ		
<b>Clone:</b>	4G1		
<b>Formulation:</b>	PBS, pH 7.4 containing 0.2% sodium azide and 10% glycerol		
<b>Purification:</b>	Protein G affinity chromatography		
<b>Applications:</b>	ELISA, WB, ICC/IF		
<b>Storage &amp; Stability:</b>	Store at 2-8°C for 1 week. For long term storage, aliquot and store at -20°C to -80°C. Avoid repeated freezing and thawing cycles.		

Western blot of A549 (lung carcinoma) cell lysate(40ug) using CSI15560 at 1:500



ICC/IF analysis of LYVE-1 in A549 cells using CSI15560 at 1:100



# cellsciences.com

---

NOT FOR HUMAN USE. FOR RESEARCH ONLY. NOT FOR DIAGNOSTIC OR THERAPEUTIC USE.



**Cell Sciences®**  
65 Parker Street  
Unit 11  
Newburyport, MA 01950

Toll Free: 888-769-1246  
Phone: 978-572-1070  
Fax: 978-992-0298

E-mail: [info@cellsciences.com](mailto:info@cellsciences.com)  
Website: [www.cellsciences.com](http://www.cellsciences.com)