

TLR7

Mouse Anti-Human TLR7 Clone 4F4 mAb

Catalog No.	CSI15555A	Quantity:	50 µl
	CSI15555B		100 µl

Description: TLR7 is one of toll-like receptors which are type I transmembrane proteins involved in innate immunity by recognizing microbial conserved structures. These proteins are characterized by multiple copies of leucine rich repeats in the extracellular domain and IL-1 receptor motif in the cytoplasmic domain, and act through adaptor molecules such as MyD88 and TIRAP to activate various kinases and transcription factors. Human TLR7 (hTLR7) is predominantly expressed in lung, placenta and spleen and hTLR7, 8 genes are located on the sex chromosome X. hTLR7 may play an important role in detecting and combating viral infections.

Concentration: 1 mg/ml

Gene ID: 51284

Protein Accession No.: NP_057646

Host: Mouse

Immunogen: Recombinant human TLR7 (451-500 aa) purified from *E. coli*

Isotype: Mouse IgG1 κ

Clone: Anti-human TLR7 mAb, clone 4F4, is derived from hybridization of mouse SP2/O myeloma cells with spleen cells from BALB/c mice immunized with a recombinant human TLR7 protein.

Formulation: Liquid. Supplied in Phosphate-Buffered Saline (pH 7.4) with 0.1% Sodium azide.
Precaution: Sodium azide is a poisonous and hazardous substance which should be handled by trained staff only.

Purification: By protein-G affinity chromatography

Reacts With: Human

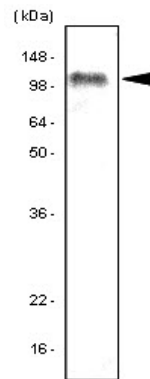
Applications: ELISA, WB (Cell lysate)

Application Notes: The antibody has been tested by ELISA and Western blot analysis to assure specificity and reactivity. Since application varies, however, each investigation should be titrated by the reagent to obtain optimal results. Recommended dilution range for Western blot analysis is 1:500 ~ 2,000. Recommended starting dilution is 1:1,000.



Storage & Stability: Can be stored at +4C. For long term storage, aliquot and store at -20C. **Avoid repeated freezing and thawing cycles.**

Western Blot Analysis: The Ramos cell lysates (80 ug) were resolved by SDS-PAGE, transferred to PVDF membrane and probed with anti-human TLR7 antibody (1:1000). Proteins were visualized using a goat anti-mouse secondary antibody conjugated to HRP and an ECL detection system. Arrow indicates TLR7 protein in human Ramos cells.



NOT FOR HUMAN USE. FOR RESEARCH ONLY. NOT FOR DIAGNOSTIC OR THERAPEUTIC USE.