

## NCR3

### Mouse Anti-Human NKp30/NCR3 Clone y4E6 mAb

**Catalog No.** CSI15550A                      **Quantity:** 50 µl  
CSI15550B    100 µl

**Alternate Names:** 1C7, CD337, LY117, MALS, NKp30, lymphocyte antigen 117

**Description:** Natural cytotoxicity triggering receptor 3 (termed NKp30 or NCR3) is a member of the Ig superfamily that may cooperate with NKp46 and NKp44 in the induction of cytotoxicity against a variety of target cells and is selectively expressed by all NK cells, both freshly isolated and cultured in IL-2, thus representing an optimal marker for NK cell identification. Similar to NKp46 and CD16, NKp30 associated with CD3ζ chains that become tyrosine phosphorylated following cell treatment with pervanadate. Its extracellular portion is characterized by a single domain of the V-type and by a region rich in hydrophobic amino acids, potentially involved in protein/protein interactions that connects the Ig V-like domain with the transmembrane portion.

**Concentration:** 1 mg/ml

**Gene ID:** 259197

**Protein Accession No.:** NP\_667341

**Specificity:** This antibody is specific for NKp30 and does not cross react with NKp46 and NKp44

**Host:** Mouse

**Immunogen:** Recombinant extracellular domain (19-138aa) of human NKp30(NCR3) purified from *E. coli*

**Isotype:** Mouse IgG1 heavy chain and κ light chain

**Clone:** Anti-human NKp30 (NCR3) mAb, clone y4E6, is derived from hybridization of mouse P3-X63-Ag8.653 myeloma cells with spleen cells from BALB/c immunized with recombinant human extracellular domain of NKp30 protein.

**Formulation:** Liquid. Supplied in Phosphate-Buffered Saline (pH 7.4) with 0.1% Sodium Azide.

**Precaution:** Sodium azide is a poisonous and hazardous substance which should be handled by trained staff only.



**Purification:** By protein-G affinity chromatography

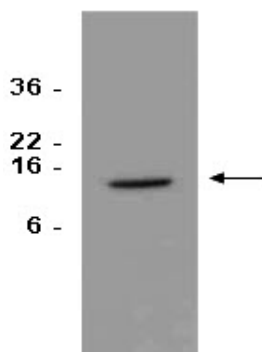
**Cross-Reactivity:** Human

**Applications:** ELISA, WB (Recombinant protein)

**Application Notes:** **Western Blot Analysis**

Human recombinant proteins, extracellular domain of Nkp30(50ng) was resolved by SDS-PAGE, transferred to PVDF membrane and probed with anti-human Nkp30 (1:1,000). Protein was visualized using a goat anti-mouse secondary antibody conjugated to HRP and an ECL detection system. Arrow indicates human recombinant protein Nkp30 (residues 19~138)

**Storage & Stability:** Can be stored at +4°C. For long term storage, aliquot and store at -20°C. **Avoid repeated freezing and thawing cycles.**



NOT FOR HUMAN USE. FOR RESEARCH ONLY. NOT FOR DIAGNOSTIC OR THERAPEUTIC USE.



**Cell Sciences**<sup>®</sup>  
480 Neponset Street  
Bldg 12A  
Canton, MA 02021

Toll Free: 888-769-1246  
Phone: 781-828-0610  
Fax: 781-828-0542

E-mail: [info@cellsciences.com](mailto:info@cellsciences.com)  
Website: [www.cellsciences.com](http://www.cellsciences.com)