

RASSF1

Mouse Anti-Human NF1/RASA1 Clone 3F3 mAb

Catalog No.	CSI15547A	Quantity:	50 µl
	CSI15547B		100 µl

Alternate Names: 123F2, RDA32, NORE2A, RASSF1A, REH3P21

Description: The tumor suppressor gene RASSF1A (3p21.3), human Ras association domain family 1A, is expressed in heart, brain, placenta, lung, liver, skeletal muscle, kidney, pancreas, spleen, thymus, prostate, testis, small intestine, colon, and peripheral blood leukocytes. RASSF1A expression is inhibited by hypermethylation of the CpG island including the promoter and early transcribed regions of the human RASSF1A gene. Hypermethylated RASSF1A promoter is observed in primary tumors. Furthermore, RASSF1A is related with cell cycle regulation, apoptosis and microtubule stability

Concentration: 1 mg/ml

Protein Accession No.: NP_009113

Gene ID: 11186

Immunogen: Recombinant human RASSF1A (aa 1-340) purified from *E. coli*

Isotype: Mouse IgG₁ heavy chain and κ light chain

Clone: Anti-human RASSF1A mAb, clone 3F3, is derived from hybridization of mouse SP2/O myeloma cells with spleen cells from BALB/c mice immunized with recombinant RASSF1A.

Formulation: Liquid. Supplied in Phosphate-Buffered Saline (pH 7.4) with 0.1% Sodium Azide.
Precaution: Sodium azide is a poisonous and hazardous substance which should be handled by trained staff only.

Applications: ELISA, WB, ICC

Application Notes: The antibody has been tested by ELISA, Western blot and immunocytochemistry analysis to assure specificity and reactivity. Since application varies, however, each investigation should be titrated by the reagent to obtain optimal results. Recommended dilution range for Western blot analysis is 1:500 ~ 1:2,000.



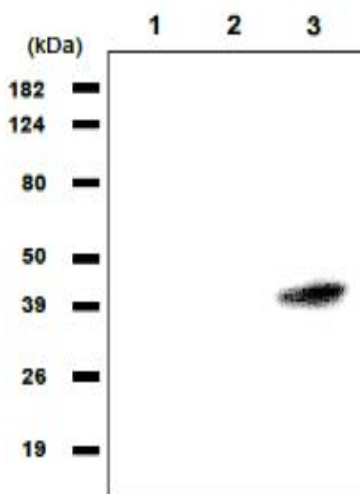
Recommended starting dilution is 1:1,000.

Storage & Stability:

Can be stored at +4°C. For long term storage, aliquot and store at -20°C. **Avoid repeated freezing and thawing cycles.**

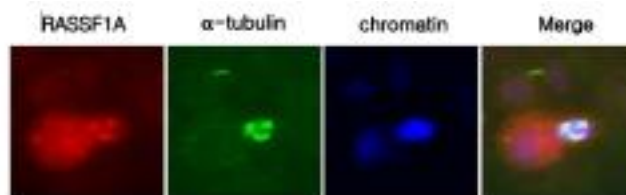
Western blot analysis

Cell lysates of HEK293(1), A549(2) and HeLa(3) were resolved by SDS-PAGE, transferred to PVDF membrane and probed with anti-human RASSF1A (1:1000). Proteins were visualized using a goat anti-mouse secondary antibody conjugated to HRP and an ECL detection system.



Immunocytochemistry

A431 cells were labeled with anti-RASSF1A (clone 3F3) mAb, and detection was using a biotinylated secondary antibody and Texas-red conj streptavidin.



NOT FOR HUMAN USE. FOR RESEARCH ONLY. NOT FOR DIAGNOSTIC OR THERAPEUTIC USE.

