

SETD7

Mouse Anti-Human SET 7/9 Clone s4E5 mAb

Catalog No.	CSI15544A	Quantity:	50 µl
	CSI15544B		100 µl

Alternate Names: KMT7, SET7, SET9, SET7/9

Description: SET7/9 is a histone methyltransferase (HMTase) that transfers methyl group to Lys of histone H3, in complex with S-adenosyl-L-methionine(AdoMet). The methylation of lysine residues of histones plays a critical role in the regulation of chromatin structure and gene expression. Acetylation, phosphorylation and methylation of the amino-terminal tails of histone are thought to be involved in the regulation of chromatin structure and function. The enzymes identified in the methylation of specific lysine residue on histones belong to the SET family with just one exception. SET7/9, unlike most other SET proteins, is exclusively a mono-methylase.

Concentration: 1 mg/ml

Protein Accession No.: NP_085151

Gene ID: 80854

Immunogen: Recombinant human SET7/9 (1-366 aa) purified from *E. coli*

Isotype: Mouse IgG_{2b}, heavy chains and κ light chains

Clone: Anti-human SET7/9 mAb, clone s4E5, is derived from hybridization of mouse SP2/0 myeloma cells with spleen cells from BALB/c mice immunized with recombinant SET7/9.

Formulation: Liquid supplied in phosphate buffered saline, pH 7.4, containing 0.1% sodium azide.

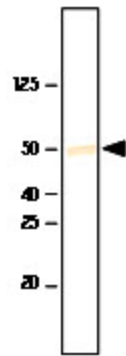
Precaution: Sodium azide is a poisonous and hazardous substance which should be handled by trained staff only.

Applications: ELISA, WB (Recombinant protein)

Application Notes: The antibody has been tested by ELISA and Western blot analysis to assure specificity and reactivity. Since application varies, however, each investigation should be titrated by the reagent to obtain optimal results. Recommended dilution range for Western blot analysis is 1:500 ~ 2,000.
Recommended starting dilution is 1:1,000.

Storage & Stability: Can be stored at +4°C. For long term storage, aliquot and store at -20°C. **Avoid repeated freezing and thawing cycles.**





NOT FOR HUMAN USE. FOR RESEARCH ONLY. NOT FOR DIAGNOSTIC OR THERAPEUTIC USE.



Cell Sciences[®]
480 Neponset Street
Bldg 12A
Canton, MA 02021

Toll Free: 888-769-1246
Phone: 781-828-0610
Fax: 781-828-0542

E-mail: info@cellsciences.com
Website: www.cellsciences.com