

PDGFRB

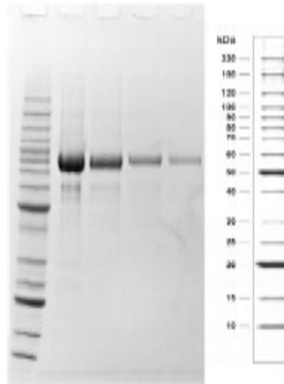
Recombinant Human PDGFR-beta (aa 558-1106) His-Tagged

Catalog No.	CSI13452	Quantity:	10 µg
Alternate Names:	Platelet-Derived Growth Factor Receptor beta, CD140B, IBGC4, IMF1, JTK12, KOGS, PDGFR, PDGFR-1, PDGFR1, PENTT		
Description:	<p>PDGFR-beta is a cell surface tyrosine kinase receptor for members of the platelet-derived growth factor family. These growth factors are mitogens for cells of mesenchymal origin. The PDGF isoforms AA, BB, AB, CC, and DD are dimeric molecules. They bind two receptor molecules simultaneously and dimerize them upon binding. PDGFR-alpha binds the A, B, and C chains of PDGF with high affinity, whereas PDGFR-beta binds the B and D chain with high affinity.</p> <p>Recombinant human PDGFR-beta contains the catalytic domain, amino acids 558-1106, with a 39 aa N-terminal addition including a 6x His tag.</p>		
Gene ID:	5159		
Protein Accession No:	NP_002600		
Concentration:	~0.4 mg/ml (Bradford vs. BSA)		
Source:	Insect cells		
Molecular Weight:	66.3 kDa (theoretical)		
Formulation:	Liquid in 20 mM Tris, pH 7.5 + 100 mM NaCl + 0.05 mM EDTA + 0.05% NP-40 + 1 mM DTT + 50% glycerol.		
Purity:	> 85% by SDS-PAGE		
Product Identity:	Confirmed by mass spectrometry.		
Activation:	Not activated by any special procedures.		
Specific Activity:	200 nM of phosphate transferred to Abl1 peptide substrate (EAIYAAPFAKKK) per minute per µg of total protein at 30°C, at 5µg/ml total protein concentration.		
Amino Acid Sequence:	<p><u>MSYYHHHHHH DYDIPTTENL YFQGAMLVPR GSPWDPEFQK KPRYEIRWKV</u> <u>IESVSSDGHE YIYVDPMLP YDSTWELPRD QLVLGRTLGS GAFGQVVEAT</u> <u>AHGLSHSQAT MKVAVKMLKS TARSEKQAL MSELKIMSHL GPHLNVNLL</u> <u>GACTKGGPIY IITEYCRYGD LVDYLHRNKH TFLQHHSDKR RPPSAELYSN</u> <u>ALPVGLPLPS HVSLTGESDG GYMDMSKDES VDYVPMLDMK GDVKYADIES</u> <u>SNYMAPYDNY VPSAPERTCR ATLINEPVL SYMDLVGFSY QVANGMEFLA</u> <u>SKNCVHRDLA ARNVLICEGK LVKICDFGLA RDIMRDSNYI SKGSTFLPLK</u> <u>WMAPEFIFNS LYTTLSDVWS FGILLWEIFT LGGTPYPELP MNEQFYNAIK</u> <u>RGYRMAQPAH ASDEIYEIMQ KCWEEKFEIR PPFSQLVLLL ERLLGEGYKK</u> <u>KYQQVDEEFL RSDHPAILRS QARLPGFHGL RSPLDTSSVL YTAVQPNEGD</u> <u>NDYIIPDP KPEVADEGPL EGSPSLASST LNEVNTSSTI SCDSPLEPQD</u> <u>EPEPEPQLEL QVEPEPELEQ LPDSGCPAPR AEAEDSFL</u></p>		



Storage & Stability: Stable for 6 months at -80°C. DO NOT STORE DILUTED. **Avoid repeated freeze-thaw cycles.**

The SDS-PAGE and/or Native PAGE were run on 4-20% Tris-Glycine Novex® gels. Lane 1: Invitrogen™ BenchMark™ Protein Ladder; Lane 2: 10 µg PDGFRB; Lane 3: 5 µg PDGFRB; Lane 4: 2 µg PDGFRB; Lane 5: 1 µg PDGFRB



NOT FOR HUMAN USE. FOR RESEARCH ONLY. NOT FOR DIAGNOSTIC OR THERAPEUTIC USE.