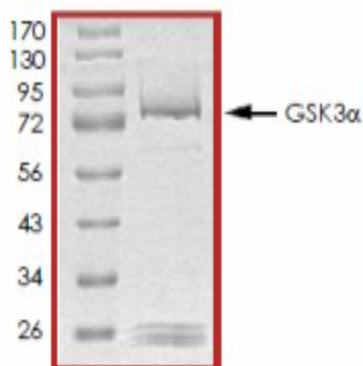


## GSK3A

### Recombinant Human Glycogen Synthase Kinase 3 alpha GST Active

<b>Catalog No.</b>	CSI13412A CSI13412B	<b>Quantity:</b>	5 µg 10 µg
<b>Description:</b>	Recombinant Human full length GSK3 Alpha with N-terminal GST tag. GSK3 alpha is a multifunctional protein serine kinase, homologous to Drosophila 'shaggy' (zeste-white3) and implicated in the control of several regulatory proteins including glycogen synthase and transcription factors (e.g., JUN). GSK3 alpha also plays a role in the WNT and PI3K signaling pathways. Alzheimer disease is associated with increased production and aggregation of amyloid-beta-40 and -42 peptides into plaques. GSK3 alpha is required for maximal production of the beta-amyloid-40 and -42 peptides generated from the amyloid precursor protein by presenilin-dependent gamma-secretase cleavage. In vitro, lithium, a GSK3 alpha inhibitor, blocks the production of the beta-amyloid peptides by interfering with the gamma-secretase step.		
<b>Concentration:</b>	0.1 mg/ml		
<b>GeneID:</b>	2931		
<b>Protein Accession No:</b>	NM_019884		
<b>Source:</b>	Sf9 insect cells		
<b>Molecular Weight:</b>	~81 kDa		
<b>Formulation:</b>	Liquid in 50 mM Tris-HCl, pH 7.5 + 150 mM NaCl + 0.25 mM DTT + 0.1 mM EGTA + 0.1 mM EDTA + 0.1 PMSF + 25% glycerol		
<b>Purity:</b>	>90% as determined by densitometry		
<b>Specific Activity:</b>	>100 nmol/min/mg (lot specific) as determined by Kinase Activity Assay		
<b>Storage &amp; Stability:</b>	Stable for 1 year in working aliquots at -80°C. <b>Avoid repeated freeze-thaw cycles.</b>		

SDS-PAGE analysis



NOT FOR HUMAN USE. FOR RESEARCH ONLY. NOT FOR DIAGNOSTIC OR THERAPEUTIC USE.

