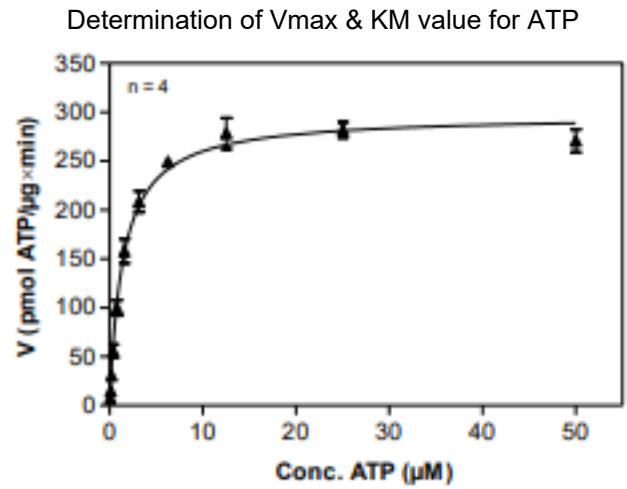
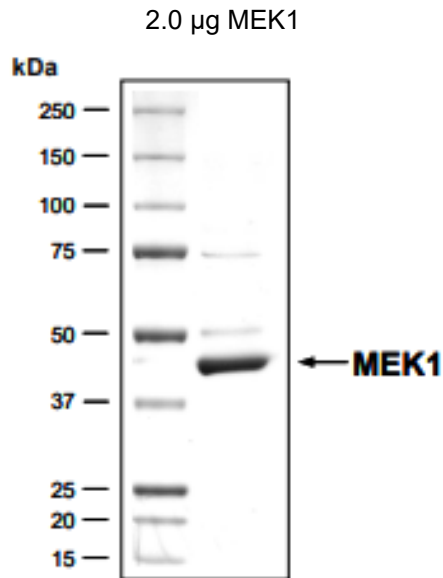


MAP2K1

Recombinant Human MEK1 wt, Active

Catalog No.	CSI12121A CSI12121B CSI12121C	Quantity:	10 µg 100 µg 1.0 mg
Alternate Names:	Dual specificity mitogen-activated protein kinase kinase 1, MAPK/ERK kinase 1, MEK 1, MAP2K1, ERK activator kinase 1, MAP kinase kinase 1, MAPKK 1, MKK1		
Description:	Human MEK1 wild type, full length, amino acids M1-V393, activated, untagged, expressed in Sf9 insect cells		
Source:	Sf9 insect cells		
UniProt ID:	Q02750		
NCBI/Protein:	NP_002746.1		
Concentration:	0.925 µg/µl		
Molecular Weight:	43,569 Da predicted		
Formulation:	50 mM HEPES, pH 7.5, 100 mM NaCl, 3 mM 2-Mercaptoethanol, 20% glycerol		
Purification:	Immobilized metal affinity chromatography		
Specific Activity:	297 pmol/µg × min ATP-KM: 1.4 µM, filter binding assay Assay conditions: 60 mM HEPES-NaOH, pH 7.5 3 mM MgCl ₂ 3 mM MnCl ₂ 3 µM Na-orthovanadate 1.2 mM DTT 2.5 µg / 50 µl PEG20.000 ATP (variable) Substrate: ERK2-K54R 100 µg/ml MEK1: 1 µg/ml		
Activation:	with B-RAF		
Purity & Identity:	Determined by Coomassie (BSA standard), LC-ESI-MS/MS mass spectrometry		
Acitivity:	active using ADP-Glo™ Kinase assay		
Storage & Stability:	Store at -80°C. Avoid repeated freeze-thaw cycles.		



NOT FOR HUMAN USE. FOR RESEARCH ONLY. NOT FOR DIAGNOSTIC OR THERAPEUTIC USE.

