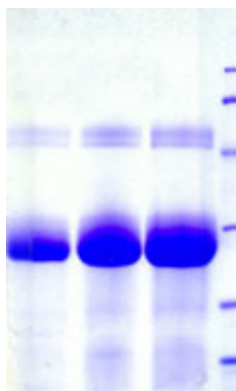


Native Human Immunoglobulin G (IgG), Fab Fragment

Catalog No.	CSI11986A CSI11986B	Quantity:	1 mg 10 mg
Description:	Isolated fab fragments can be used to bind antigen to antibody in solution or on the cell surface without causing the undesired complications of cross-linking and precipitation, or "patching" and capping," respectively.		
Source:	Human plasma		
Molecular Weight:	50 kDa		
Purity:	≥ 95% by SDS-PAGE No reaction by IEP to antisera to human IgG-Fc.		
Formulation:	20 mM phosphate, pH 7.4, containing 150 mM NaCl and 0.05% NaN ₃		
Extinction Coefficient:	1.35		
Storage & Stability:	Store at -20°C to -80°C for at least 1 year.		
Infectious Disease Statement:	Negative or non-reactive at the donor level for anti HIV 1 and 2, anti HCV, HBsAg, HCV NAT, HIV-1 NAT, and syphilis by FDA approved methods.		
Country of Origin:	USA		

SDS-PAGE reduced



NOT FOR HUMAN USE. FOR RESEARCH ONLY. NOT FOR DIAGNOSTIC OR THERAPEUTIC USE.