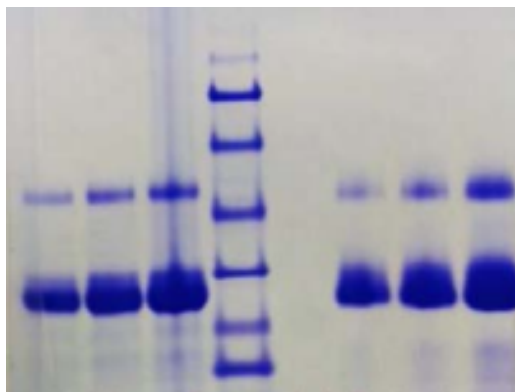


Native Human Immunoglobulin G (IgG), Light Chain

Catalog No.	CSI11985A	Quantity:	1 mg
Description:	Immunoglobulin light chain is the small subunit of an antibody. The two types of light chain, termed lambda (λ) and kappa (κ), are found in antibodies. A given immunoglobulin either has κ chains or λ chains.		
Source:	Human plasma		
Molecular Weight:	23 kDa		
Purity:	$\geq 95\%$ by SDS-PAGE and Western blot		
Formulation:	20 mM phosphate, pH 7.4, containing 150 mM NaCl and 0.05% NaN ₃		
Extinction Coefficient:	1.45		
Storage & Stability:	Store at -20°C to -80°C for at least 1 year.		
Infectious Disease Statement:	Negative or non-reactive at the donor level for anti HIV 1 and 2, anti HCV, HBsAg, HCV NAT, HIV-1 NAT, and syphilis by FDA approved methods.		
Country of Origin:	USA		

SDS-PAGE reduced/non-reduced



NOT FOR HUMAN USE. FOR RESEARCH ONLY. NOT FOR DIAGNOSTIC OR THERAPEUTIC USE.