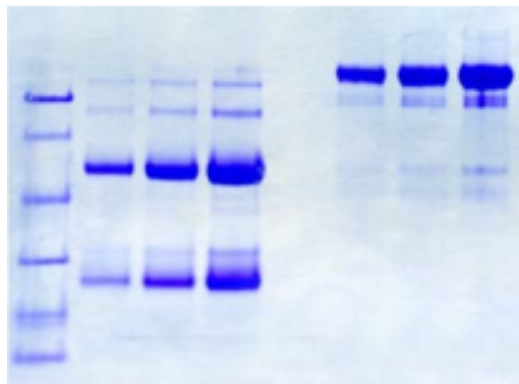


Native Human Immunoglobulin G (IgG)

Catalog No.	CSI11984A CSI11984B	Quantity:	100 mg 1 gram
Description:	The most abundant immunoglobulin in plasma, IgG is important for the defense against infection for newborns because of its transfer through the placenta during pregnancy. It readily diffuses into the extravascular body spaces where it plays a major role in neutralizing bacterial toxins and in enhancing the phagocytosis of microorganisms.		
Source:	Human plasma		
Molecular Weight:	150 kDa		
Purity:	≥ 95% by SDS-PAGE and Western blot		
Formulation:	Lyophilized from 20 mM phosphate, pH 7.4, containing 150 mM NaCl and 0.05% NaN ₃		
Extinction Coefficient:	1.36		
Storage & Stability:	Store at -20°C to -80°C for at least 1 year.		
Infectious Disease Statement:	Negative or non-reactive at the donor level for anti HIV 1 and 2, anti HCV, HBsAg, HCV NAT, HIV-1 NAT, and syphilis by FDA approved methods.		
Country of Origin:	USA		

SDS-PAGE reduced/non-reduced



NOT FOR HUMAN USE. FOR RESEARCH ONLY. NOT FOR DIAGNOSTIC OR THERAPEUTIC USE.

