

Alb Native Guinea Pig Albumin

Catalog No.	CSI11973A	Quantity:	10 mg
	CSI11973B		50 mg

Description: Albumin is prepared from guinea pig plasma by proprietary fractionation methods and lyophilized. Albumin is a water-soluble protein with considerable structural stability and comprises 60% of the total protein of plasma. It functions as a carrier of hormones, enzymes, fatty acids, metal ions, as well as medicinal products.

Source: Plasma from *Cava porcellus* obtained from a USDA certified collection center.

Molecular Weight: 66 kDa

Formulation: Lyophilized, salt free

Purity: > 93% by SDS-PAGE

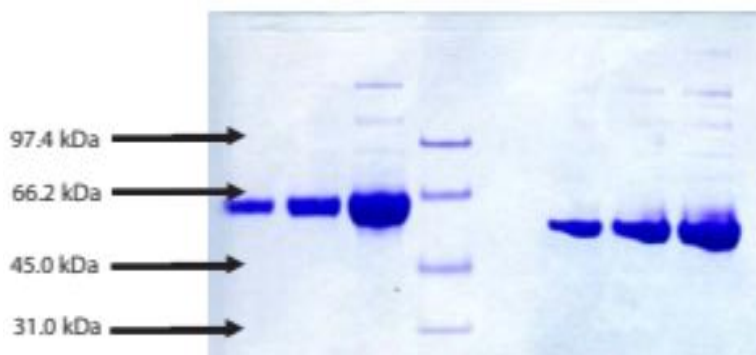
Protein Determination: $E^{0.1\%}_{280nm} = 0.667$
Biuret for final calculation.

Reconstitution: Reconstitute in deionized water to at least 100 µg/ml

Storage & Stability: Store unopened at -20°C to -80°C for at least 1 year. Upon reconstitution, prepare aliquots and store at

Country of Origin: Guinea pig plasma was obtained from healthy animals of US origin and under the care of a registered veterinarian.

SDS-PAGE:
4-12% Bis-Tris NuPAGE



NOT FOR HUMAN USE. FOR RESEARCH ONLY. NOT FOR DIAGNOSTIC OR THERAPEUTIC USE.