

## PIM1

### Recombinant Human Pim-1 Oncogene Active GST-His

<b>Catalog No.</b>	CSI11188	<b>Quantity:</b>	50 µg
<b>Alternate Names:</b>	PIM, Oncogene PIM1, non-specific serine/threonine protein kinase, pim-1 kinase 44 kDa isoform, pim-1 oncogene (proviral integration site 1)		
<b>Description:</b>	Human PIM1, Amino acids M <sub>1</sub> -K <sub>313</sub> (as in GenBank entry NM_002648)*, N-terminally fused to GST-HIS <sub>6</sub> -Thrombin cleavage site. *Sequence may contain documented polymorphisms <b>Detailed sequence on request</b>		
<b>Concentration:</b>	0.185 µg/µl		
<b>Gene ID:</b>	5292		
<b>Protein Accession No:</b>	NM_002648		
<b>Source:</b>	Baculovirus infected Sf9 cells		
<b>Molecular Weight:</b>	Theoretical MW <sub>Fusion Protein</sub> : 65,423 Da		
<b>Formulation:</b>	50 mM Tris-HCl, pH 8.0 + 100 mM NaCl + 5 mM DTT + 15 mM reduced glutathione, 20% glycerol		
<b>Purification:</b>	One-step affinity purification using GSH-agarose		
<b>Product Identity:</b>	PIM1 was confirmed as human PIM1 by mass spectroscopy LC-ESIMS/MS		
<b>Specific Activity:</b>	273 pmol/µg×min		

Method for determination of Km value and specific activity:

- Assay conditions:
  - 60 mM HEPES-NaOH, pH 7.5
  - 3 mM MgCl<sub>2</sub>
  - 3 mM MnCl<sub>2</sub>
  - 3 µM Na-orthovanadate
  - 1.2 mM DTT
  - 50 µg / ml PEG<sub>20,000</sub>
  - ATP (variable)
  - Substrate: R<sub>11</sub>-GSK3(14-27)
  - (R<sub>11</sub>-SGRARTSSFAEPGGK), 100 µg / ml
  - Recombinant PIM1: 100 ng / ml
- Filter binding assay
  - MSFC membrane (Millipore)

#### Storage & Stability:



**Cell Sciences®**  
480 Neponset Street  
Bldg 12A  
Canton, MA 02021

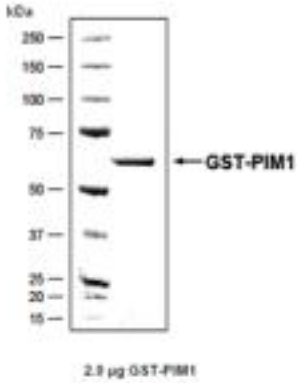
Toll Free: 888-769-1246  
Phone: 781-828-0610  
Fax: 781-828-0542

E-mail: [info@cellsciences.com](mailto:info@cellsciences.com)  
Website: [www.cellsciences.com](http://www.cellsciences.com)

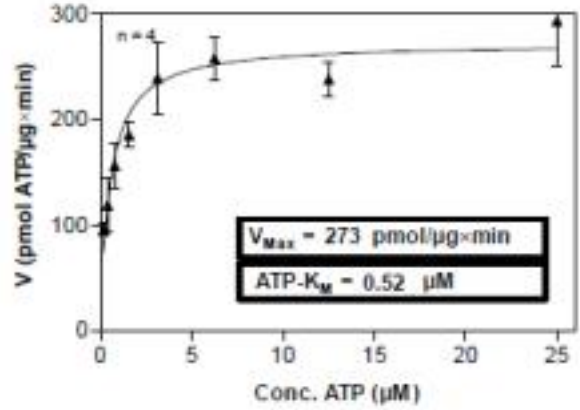
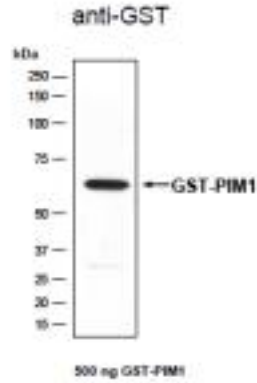
Store in working aliquots at -80°C. **Avoid repeated freeze-thaw cycles.**

## Determination of $K_m$ value for ATP:

Coomassie stain:



Western blot analysis:



NOT FOR HUMAN USE. FOR RESEARCH ONLY. NOT FOR DIAGNOSTIC OR THERAPEUTIC USE.

