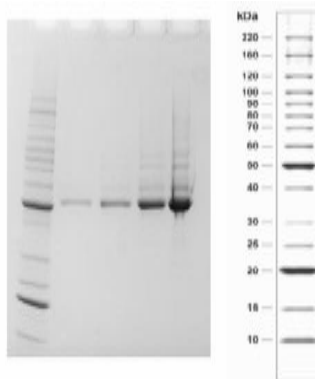


## MAP2K1

### Recombinant Human MEK1/Mitogen-activated Protein Kinase Kinase 1 His

<b>Catalog No.</b>	CSI11007	<b>Quantity:</b>	10 µg
<b>Alternate Names:</b>	MEK1, MKK1, MAPKK1, PRKMK1		
<b>Description:</b>	MAP2K1 (MEK1) kinase is a dual-specificity protein kinase that functions in mitogen-activated protein kinase (MAPK) cascades, controlling cell growth and differentiation. MAP2K1 is activated by a wide variety of growth factors and cytokines and also by membrane-dependent depolarization and calcium influx.		
<b>Concentration:</b>	0.38 mg/ml total protein using the Bradford protein assay with BSA as a standard.		
<b>Gene ID:</b>	5604		
<b>Protein Accession No:</b>	NP_002746		
<b>Source:</b>	Insect cells		
<b>Molecular Weight:</b>	49.2 kDa calculated from the sequence		
<b>Formulation:</b>	50 mM Tris, pH 7.5, + 150 mM NaCl + 0.05 mM EDTA + 0.05% Triton® X-100 + 2 mM DTT + 50% Glycerol		
<b>Purity:</b>	80% as determined by a Coomassie blue-stained SDS-PAGE		
<b>Specific Activity:</b>	7290 nmole of phosphate transferred to myelin basic protein (MBP)/min/mg total protein at 30°C. Activity determined at a final protein concentration of 0.14 µg/ml.		
<b>Storage &amp; Stability:</b>	Store at -80°C. At first use, aliquot and store at -80°C. If properly stored at -80°C, stable for 6 months from date of purchase. <b>Avoid repeated freeze-thaw cycles.</b>		

SDS-PAGE of Recombinant Human MAP2K1. Lane 1, MW markers. Lane 2, 1 µg MAP2K1. Lane 3, 2 µg MAP2K1. Lane 4, 5 µg MAP2K1. Lane 5, 10 µg MAP2K1.



**NOT FOR HUMAN USE. FOR RESEARCH ONLY. NOT FOR DIAGNOSTIC OR THERAPEUTIC USE.**

