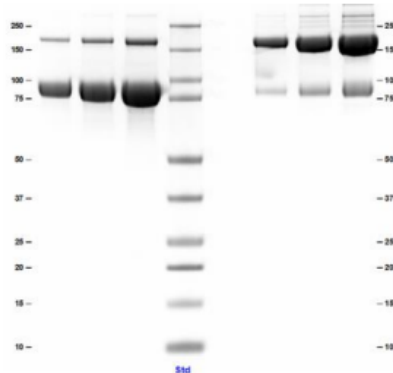


BCHE

Native Human Butyrylcholinesterase / BCHE

Catalog No.	CSI10409B	Quantity:	10 U
	CSI10409C		100 U
	CSI10409D		1KU
Alternate Names:	Cholinesterase (EC:3.1.1.8), Acylcholine acylhydrolase, Butyrylcholine esterase, BCHE, Choline esterase II, Pseudocholinesterase		
Description:	Butyrylcholinesterase (BChE) is a tetrameric glycoprotein belonging to the family of serine hydrolases known as cholinesterases. While there is currently no know physiological function for BChE, it has been shown to behave as a bioscavenger against cocaine toxicity and organophosphorus nerve agents.		
UniProt ID:	P06276		
Source:	Human plasma		
Concentration:	Lot specific, pre-lyophilization		
Volume:	Lot specific, pre-lyophilization		
Molecular Weight:	340 kDa		
Formulation:	Lyophilized from 100 mM L-Histidine, 240 mM sucrose, 0.3 mM Tween-20, pH 6.0		
Purity:	> 90 % by SDS-PAGE		
Extinction Coefficient:	$E^{0.1\%}_{280nm} = 1.8$		
Biological Activity:	≥ 50 U/mg protein, defined as one unit will hydrolyze 1 μmol of butyrylcholine to choline and butyrate per minute at pH 8.0 at 37 °C		
Reconstitution:	Centrifuge vial prior to opening. Reconstitute with sterile-filtered deionized water to the original volume with gentle mixing to ensure adequate homogenization.		
Storage & Stability:	Store lyophilized protein at -20°C to -80°C for up to 1 year.		
Statement:	Prepared from plasma shown to be non-reactive for HBsAg, anti-HCV and negative for anti-HIV 1 & 2 by FDA-required tests.		

SDS-PAGE: 4-12% Bis-Tris gel, reduced, non-reduced



NOT FOR HUMAN USE. FOR RESEARCH ONLY. NOT FOR DIAGNOSTIC OR THERAPEUTIC USE.



Cell Sciences®
65 Parker Street
Unit 11
Newburyport, MA 01950

Toll Free: 888-769-1246
Phone: 978-572-1070
Fax: 978-992-0298

E-mail: info@cellsciences.com
Website: www.cellsciences.com

cellsciences.com



Cell Sciences®
65 Parker Street
Unit 11
Newburyport, MA 01950

Toll Free: 888-769-1246
Phone: 978-572-1070
Fax: 978-992-0298

E-mail: info@cellsciences.com
Website: www.cellsciences.com