

PRLR

Rat Prolactin Receptor Fc Fusion Protein

Catalog No.	CS408A	Quantity:	100 µg
	CS408B		1.0 mg

Description: Prolactin is a neuroendocrine peptide hormone that is secreted primarily by the pituitary gland. Prolactin receptor is a class 1 cytokine transmembrane receptor that varies in size with tissue source and species. It consists of an extracellular region with 5 cysteines which contains the prolactin binding site, a single transmembrane domain and a cytoplasmic region. The extracellular domain (Ser21-Asp229) is expressed recombinantly, purified by chromatography, sterile filtered and lyophilized. >95 percent pure by SDS-PAGE and biologically active. This Fc Fusion Protein is glycosylated and expressed as a chimera with the Fc region of mouse immunoglobulin (heavy chain hinge, CH2 and CH3). Fc fusion proteins are typically more stable and resistant to degradation and clearance than native cytokines. Fc fusion proteins appear as a dimer in SDS-PAGE under non-reducing conditions.

Concentration: Lyophilized

Gene ID: 24684

Source: *E. coli*

Molecular Weight: 66 kDa

Formulation: Lyophilized powder. Volume: 0.5 ml before lyophilization

Purity: >95% by SDS-PAGE analysis

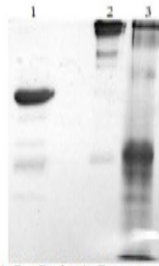
Specific Activity: ED₅₀ < 50 ng/ml in the presence of 0.5 ng/ml of recombinant human prolactin as determined in a cell proliferation assay using Nb2-11 rat lymphoma cells

Buffer: PBS

Reconstitution: Add deionized water to original volume, aliquot and freeze unused portion.

Storage & Stability: When stored at -80°C, product is stable for 3 years from date of delivery. **Avoid repeated freeze-thaw cycles.**





1. Rat Prolactin Receptor
Fc Fusion (3 ug) R
2. Rat Prolactin Receptor
Fc Fusion (3 ug) NR
3. Molecular Weight Markers

NOT FOR HUMAN USE. FOR RESEARCH ONLY. NOT FOR DIAGNOSTIC OR THERAPEUTIC USE.



Cell Sciences[®]
480 Neponset Street
Bldg 12A
Canton, MA 02021

Toll Free: 888-769-1246
Phone: 781-828-0610
Fax: 781-828-0542

E-mail: info@cellsciences.com
Website: www.cellsciences.com