

## PRLR

### Recombinant Human Prolactin Receptor Fc Fusion Protein

<b>Catalog No.</b>	CS354A	<b>Quantity:</b>	100 µg
	CS354B		1 mg

**Description:** Prolactin is a neuroendocrine peptide hormone that is secreted primarily by the pituitary gland. Prolactin receptor is a class 1 cytokine transmembrane receptor that varies in size with tissue source and species. It consists of an extracellular region with 5 cysteines which contains the prolactin binding site, a single transmembrane domain and a cytoplasmic region. The extracellular domain is expressed recombinantly, purified by chromatography, sterile filtered and lyophilized.

This Fc Fusion Protein is glycosylated and expressed as a chimera with the Fc region of mouse immunoglobulin. Fc fusion proteins are typically more stable and resistant to degradation and clearance than native cytokines. Fc fusion proteins appear as a dimer in SDS-PAGE under non-reducing conditions.

**Concentration:** Lyophilized

**Gene ID:** 5618

**Source:** *E. coli*

**Molecular Weight:** 66 kDa

**Formulation:** Lyophilized powder

**Purity:** >95% by SDS-PAGE analysis

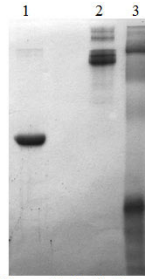
**Buffer:** PBS

**Volume:** 0.05 ml before lyophilization

**Reconstitution:** Add deionized water to original volume, aliquot and freeze unused portion.

**Storage & Stability:** When stored at -80°C, product is stable for 3 years from date of delivery. **Avoid repeated freeze-thaw cycles.**





1. Human Prolactin Receptor  
Fc Fusion (3 ug) R  
2. Human Prolactin Receptor  
Fc Fusion (3 ug) NR  
3. Molecular Weight Markers

**NOT FOR HUMAN USE. FOR RESEARCH ONLY. NOT FOR DIAGNOSTIC OR THERAPEUTIC USE.**

