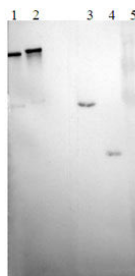


## Mouse Anti-Human Factor XI Clone 2B11 mAb

<b>Catalog No.</b>	CS348A CS348B	<b>Quantity:</b>	100 µg 1.0 mg
<b>Description:</b>	Mouse monoclonal antibody to Human Factor XI. IgG fraction purified by immobilized Protein G. Detects Factor XI and Factor XIa under non-reducing and reducing conditions. Epitope localized to the heavy chain.		
<b>Source:</b>	Hybridoma cell culture		
<b>Gene ID:</b>	2160		
<b>Purity:</b>	IgG fraction		
<b>Molecular Weight:</b>	160 kDa		
<b>Host:</b>	Mouse		
<b>Immunogen:</b>	Full length native protein (purified) (Human).		
<b>Isotype:</b>	IgG1 Kappa		
<b>Clone:</b>	2B11-E5F6		
<b>Concentration:</b>	1.0 mg/ml		
<b>Formulation:</b>	Frozen liquid with 0.05 M Sodium Phosphate + 0.1M NaCl + 1 mM EDTA, pH 6.6		
<b>Target:</b>	Recognizes the heavy chain of Factor XI		
<b>Cross-Reactivity:</b>	Human		
<b>Applications:</b>	ELISA, WB		
<b>Storage &amp; Stability:</b>	When stored at -80°C, product is stable for 5 years from date of delivery. <b>Avoid repeated freeze-thaw cycles.</b>		



Anti Human Factor XI Clone 2B11 Western Blot  
 1. Human Factor XI (0.5 ug) NR  
 2. Human Factor XIa (0.5 ug) NR  
 3. Human Factor XI (0.5 ug) R  
 4. Human Factor XIa (0.5 ug) R  
 5. Molecular Weight Markers

**NOT FOR HUMAN USE. FOR RESEARCH ONLY. NOT FOR DIAGNOSTIC OR THERAPEUTIC USE.**

