

CALCA

Recombinant Human Procalcitonin

Catalog No.	CS309A	Quantity:	2 µg
	CS309B		10 µg
	CS309C		1 mg
	CS309D		100 µg

Alternate Names: PCT

Description: Procalcitonin is a precursor of the peptide hormone called calcitonin. Procalcitonin is mainly produced by the C cells of the thyroid and certain endocrine cells of the lung. Under normal expression conditions, procalcitonin is immediately cleaved into three specific fragments, an N terminal residue, calcitonin and katacalcin. Levels of unprocessed procalcitonin have been shown to rise significantly after bacterial infection, trauma or shock. PCT is a promising biomarker that exhibits greater specificity than other proinflammatory markers (CRP, TNF- α , interleukins) in identifying patients with sepsis and can be used in the diagnosis of bacterial infections.

Gene ID: 796

UniProt ID: P01258

Source: *E. coli*

Molecular Weight: 12.8 kDa (116 aa)

Formulation: Lyophilized from a sterile filtered solution containing 10 mM Na₂PO₄, pH 7.5.

Purity: ≥ 95% determined by reducing and non-reducing SDS-PAGE

Endotoxin Level: ≤ 0.1 EU/µg, by kinetic LAL analysis

Amino Acid Sequence: APFRSALESS PADPATLSED EARLLLAALV QDYVQMKASE LEQEQEREGS
SLDSPRSKRC GNLSTCMLGT YTQDFNKFHT FPQTAIGVGA PGKKRDMSSD
LERDHRPHVS MPQAN

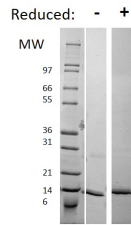
Reconstitution: **Centrifuge vial before opening.** When reconstituting the product, gently pipet and wash down the sides of the vial to ensure full recovery of the protein into solution. It is recommended to reconstitute the lyophilized product with sterile water at a concentration of 0.1 mg/mL, which can be further diluted into other aqueous solutions.

Storage & Stability: Lyophilized product is stable at room temperature for shipping purposes. Upon receipt, store at -20°C to -80°C for up to 1 year.

Upon reconstitution, the preparation is stable for up to one month at 2-8°C. For long term storage, prepare working aliquots and store at -20 to -80°C. For maximal stability, dilute to working aliquots in a 0.1% BSA solution.

Avoid repeated freeze-thaw cycles.





Human Procalcitonin Gel

Figure: 1 ug in each lane (-) non-reducing conditions and (+) reducing conditions in a 4-20% Tris-Glycine gel, stained with Coomassie Blue. Human Procalcitonin has a predicted MW of 12.8 kDa.

NOT FOR HUMAN USE. FOR RESEARCH ONLY. NOT FOR DIAGNOSTIC OR THERAPEUTIC USE.



Cell Sciences®
65 Parker Street
Unit 11
Newburyport, MA 01950

Toll Free: 888-769-1246
Phone: 978-572-1070
Fax: 978-992-0298

E-mail: info@cellsciences.com
Website: www.cellsciences.com