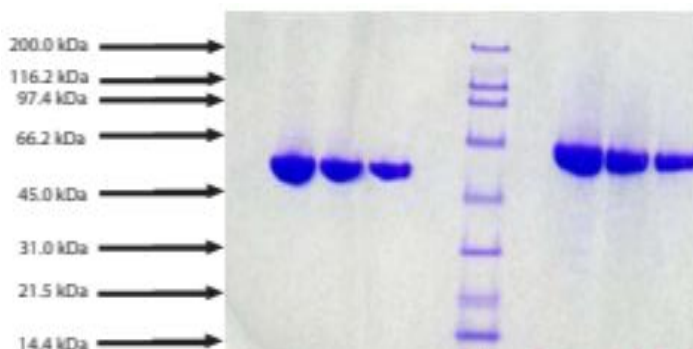


## ALB Cynomolgus Monkey Albumin

<b>Catalog No.</b>	CS162A CS162B	<b>Quantity:</b>	1 mg 10 mg
<b>Description:</b>	Albumin is prepared from cynomolgus monkey plasma by proprietary fractionation methods and lyophilized. Albumin is a water-soluble protein with considerable structural stability and comprises 60% of the total protein of plasma. It functions as a carrier of hormones, enzymes, fatty acids, metal ions, as well as medicinal products.		
<b>UniProt ID:</b>	A2V9Z4		
<b>Gene ID:</b>	704892		
<b>Formulation:</b>	Lyophilized, salt-free		
<b>Source:</b>	<i>Macaca fascicularis</i> plasma		
<b>Molecular Weight:</b>	66 kDa		
<b>Purity:</b>	> 95% by SDS-PAGE analysis		
<b>Extinction Coefficient:</b>	$E^{0.1\%}_{280\text{nm}} = 0.58$		
<b>Reconstitution:</b>	Reconstitute with deionized water to > 0.1 mg/ml.		
<b>Origin:</b>	USA		
<b>Storage &amp; Stability:</b>	Store at -20°C to -80°C for up to 1 year. Upon reconstitution, prepare working aliquots and store at -20°C to -80°C. <b>Avoid repeated freeze-thaw cycles.</b>		
<b>Infectious Disease Testing:</b>	Non-human primate products are sourced from animals screened and found negative for Herpes-B Virus, SRV, SIV, STLV-1, Measles and TB		

SDS-PAGE: non-reduced and reduced  
4-12% Bis-Tris NuPAGE



NOT FOR HUMAN USE. FOR RESEARCH ONLY. NOT FOR DIAGNOSTIC OR THERAPEUTIC USE.