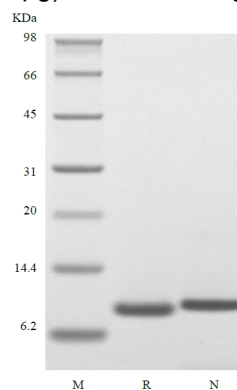


SAA1

Recombinant Human APO-Serum Amyloid A

Catalog No.	CRS300A CRS300B CRS300C	Quantity:	10 µg 50 µg 1.0 mg
Alternate Names:	Serum amyloid A-1 protein, SAA		
Description:	Serum amyloid A-1 protein which belongs to the SAA family is encoded by the SAA1 gene in humans. It is expressed by the liver and secreted in plasma. Serum amyloid A-1 is the major acute phase reactant and apolipoprotein of the HDL complex. Elevated serum SAA1 protein levels may be associated with lung cancer. The level of Apo-SAA1, normally 1-5 µg/ml in plasma increases 500-1000 fold within 24 hrs of an inflammatory stimulus and under these conditions is the most abundant HDL Apo-lipoprotein.		
UniProt ID:	P0DJ18		
Source:	<i>E. coli</i>		
Molecular Weight:	11.7 kDa (104 aa) monomer		
Formulation:	Lyophilized from sterile-filtered 20 mM Tris-HCl, 150 mM NaCl, pH 9.0		
Purity:	> 98% as determined by SDS-PAGE and HPLC		
Biological Activity:	Biological activity, over the range of 10-100 ng/ml, is determined by a chemoattract bioassay using human monocytes.		
Amino Acid Sequence:	RSFFSFLGEA FDGARDMWRA YSDMREANYI GSDKYFHARG NYDAAKRGPG GVWAAEAISN ARENIQRFFG RGAEDSLADQ AANEWGRSGK DPNHFRPAGL PEKY		
Reconstitution:	Centrifuge vial prior to opening. Add sterile distilled water to a concentration of 0.1 -1.0 mg/mL and gently pipette the solution up and down the sides of the vial. DO NOT VORTEX. Allow several minutes for complete reconstitution.		
Storage & Stability:	Upon receipt, store unopened vial at -20°C to -80°C for up to 1 year. Reconstituted solution may be stored at 2-8°C for 1 week or in aliquots at -20°C to -80°C for longer term. Avoid repeated freeze-thaw cycles.		

SDS-PAGE of rhApo-SAA (2 µg) under reducing and non-reducing conditions



cellsciences.com

NOT FOR HUMAN USE. FOR RESEARCH ONLY. NOT FOR DIAGNOSTIC OR THERAPEUTIC USE.



Cell Sciences®
65 Parker Street
Unit 11
Newburyport, MA 01950

Toll Free: 888-769-1246
Phone: 978-572-1070
Fax: 978-992-0298

E-mail: info@cellsciences.com
Website: www.cellsciences.com