

KITLG

Recombinant Human SCF, GMP Grade

Catalog No.	CRS200A-GMP CRS200B-GMP CRS200C-GMP	Quantity:	50 µg 100 µg 1.0 mg
Alternate Names:	Kit ligand, Stem cell factor, SCF, c-Kit ligand, Mast cell growth factor, MGF		
Description:	<p>Stem cell factor (SCF), is a cytokine made by fibroblasts and endothelial cells. SCF binds to the receptor c-Kit/CD117 and plays a critical role in the maintenance, survival, and differentiation of hematopoietic stem cells. While human SCF shows no activity on murine cells, murine and rat SCF are active on human cells.</p> <p>This product is produced from <i>E. coli</i> and is manufactured in a facility that does not use or process beta-lactam containing materials. No animal- or human-derived materials were used during manufacturing or as ingredients. This product is manufactured, tested, and released in an ISO 9001:2015 certified facility and follows cGMP practices. USP chapter <1043> for ancillary materials considered in the manufacture of this product.</p>		
UniProt ID:	P21583		
Source:	<i>E. coli</i>		
Molecular Weight:	18.6 kDa predicted (165 aa), monomer ~15 kDa apparent on SDS-PAGE		
Formulation:	Lyophilized (1 mg/ml) sterile-filtered 10 mM sodium phosphate, 50 mM NaCl, pH 7.5		
Purity:	≥ 97% by reducing and non-reducing SDS-PAGE		
Endotoxin Level:	< 0.05 EU/µg using USP <85>/ EP 2.6.14		
Biological Activity:	ED ₅₀ < 15 ng/ml, determined by dose-dependent proliferation of human TF-1 cells.		
Specific Activity:	~1.0 x 10 ³ IU/µg, calibrated against recombinant human stem cell factor WHO International Standard (NIBSC code 91/682).		
Amino Acid Sequence:	MEGICRNRVT NNVKDVTKLV ANLPKDYMIT LKYVPGMDVL PSHCWISEMV VQLSDSLTDL LDKFSNISEG LSNYSIIDKL VNIVDDLVEC VKENSSKDLK KSFKSPEPRL FTPEEFFRIF NRSIDAFKDF VVASETSDCV VSSTLSPEKD SRVSVTKPFM LPPVA		
Reconstitution:	<p>Allow the vial and sterile water/Water for Injection to equilibrate to room temperature. Draw up desired volume for reconstitution with sterile syringe. Aseptically puncture through rubber stopper with sterile needle, inject the buffer to achieve the desired concentration (0.1-0.5 mg/mL). Swirl the vial gently, do not vortex. Allow protein to rehydrate for 10-15 minutes at room temperature with occasional gentle mixing.</p>		
Storage & Stability:	<p>Lyophilized vial is shipped at ambient temperature. Immediately upon receipt, store unopened vial at -20°C (manual defrost freezer) or -80°C for up to 36 months. Upon reconstitution, prepare working aliquots and store at -20°C (manual defrost freezer) or -80°C. It is recommended that a carrier protein such as 0.1% HSA or BSA is added for long term storage. For short term storage reconstituted material is stable for 4-6 weeks when stored at 2-8°C. Avoid repeated freeze-thaw cycles.</p>		



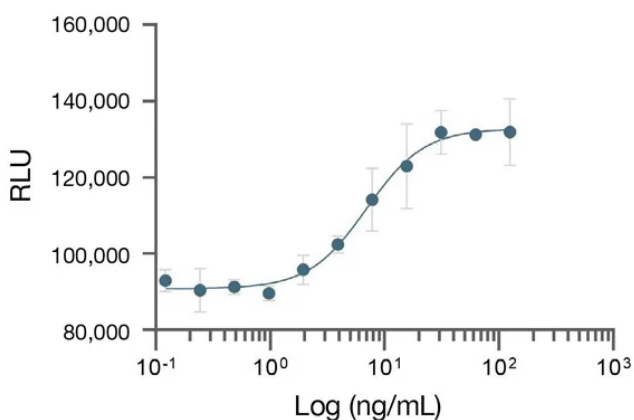
Applications:

For *ex vivo* use only. Not for injection or diagnostic procedures. The safety and efficacy of this product in diagnostic or other clinical uses has not been established.

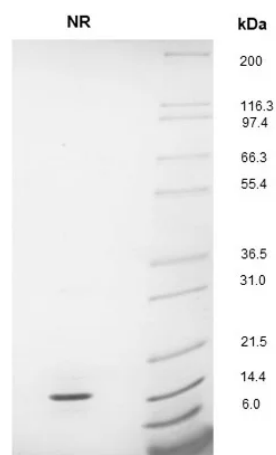
Country of Origin:

USA

GMP Grade rhSCF Proliferation Assay
using TF-1 cells.



SDS-PAGE GMP Grade rhSCF
Single Prominent band at ~15 kDa



NOT FOR HUMAN USE. FOR RESEARCH ONLY. NOT FOR DIAGNOSTIC OR THERAPEUTIC USE.



Cell Sciences®
65 Parker Street
Unit 11
Newburyport, MA 01950

Toll Free: 888-769-1246
Phone: 978-572-1070
Fax: 978-992-0298

E-mail: info@cellsciences.com
Website: www.cellsciences.com